

USER MANUAL

PAL to NTSC

PAL a NTSC

English / Español



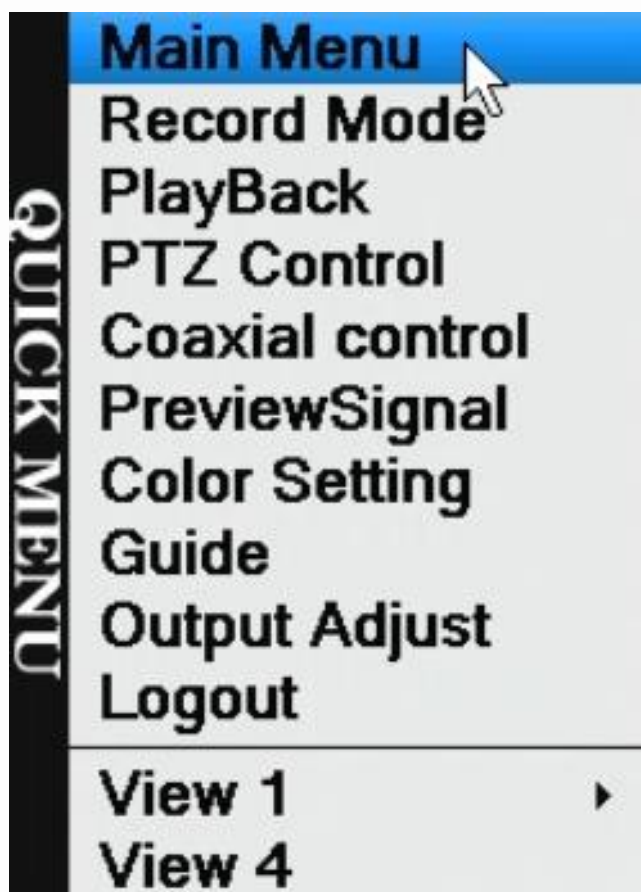
All in One Series



ENGLISH SECTION

By default, the devices come in a PAL signal. You need to change it to the NTSC signal. We'll explain you how to do it here:

1. Press the right click and go to the Main Menu



2. Select the System button. Now select the General button



3. Here you will find the Video Standard Option. Please change the option from PAL to NTSC.

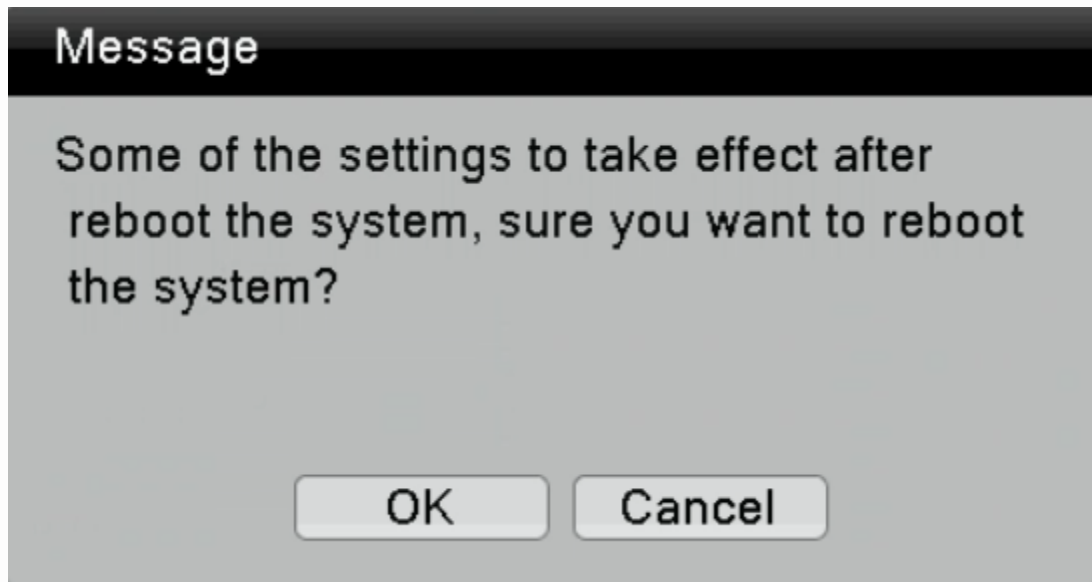
The screenshot shows a settings window titled "Main Menu->General". The "Video Standard" dropdown menu is currently set to "PAL". Other settings include System Time (2017-01-23 11:04:36), Date Format (YYYY MM), Date Separator (-), Time Format (24-HOUR), Language (ENGLISH), HDD Full (Overwrite), DVR No. (0), Auto Logout (0 min), Machine Name (LocalHost), and Guide (checked). Buttons for "OK" and "Cancel" are at the bottom right.

| | |
|----------------|-------------------------------------|
| System Time | 2017 - 01 - 23 11: 04: 36 |
| Date Format | YYYY MM [] DST |
| Date Separator | - |
| Time Format | 24-HOUR |
| Language | ENGLISH |
| HDD Full | Overwrite |
| DVR No. | 0 |
| Video Standard | PAL |
| Auto Logout | 0 min |
| Machine Name | LocalHost |
| Guide | <input checked="" type="checkbox"/> |

The screenshot shows the same settings window, but the "Video Standard" dropdown menu is open, showing "PAL" and "NTSC" as options. A mouse cursor is pointing at "NTSC". All other settings remain the same as in the previous screenshot.

| | |
|----------------|-------------------------------------|
| System Time | 2017 - 01 - 23 11: 04: 36 |
| Date Format | YYYY MM [] DST |
| Date Separator | - |
| Time Format | 24-HOUR |
| Language | ENGLISH |
| HDD Full | Overwrite |
| DVR No. | 0 |
| Video Standard | PAL / NTSC |
| Auto Logout | PAL 0 min |
| Machine Name | LocalHost |
| Guide | <input checked="" type="checkbox"/> |

4. Press OK to save the change and reboot the DVR.



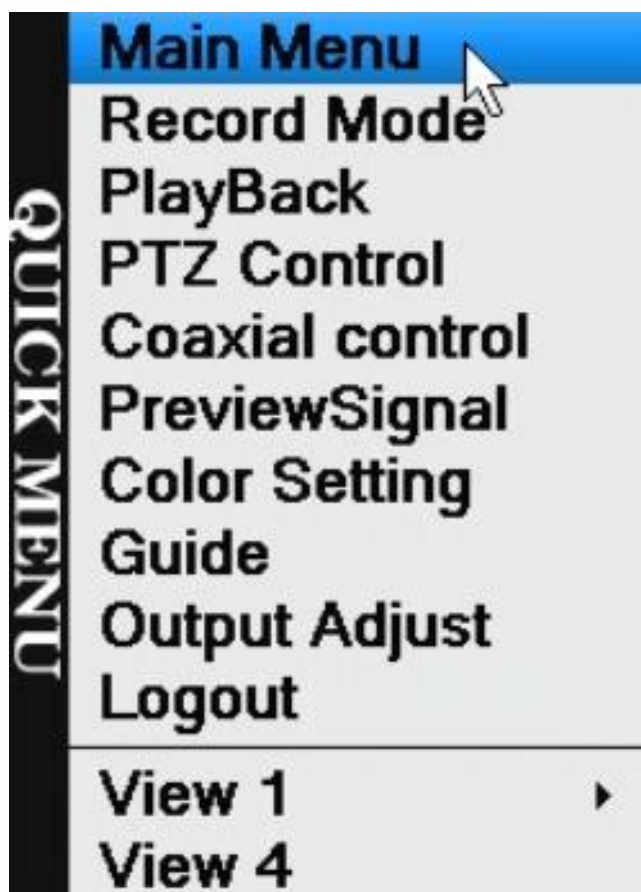
And now you'll be able to see your cameras.



SECCIÓN ESPAÑOL

Por defecto, los dispositivos vienen establecidos en señal PAL. Usted necesita cambiarlo a señal NTSC. Le explicaremos cómo realizar estos cambios a continuación:

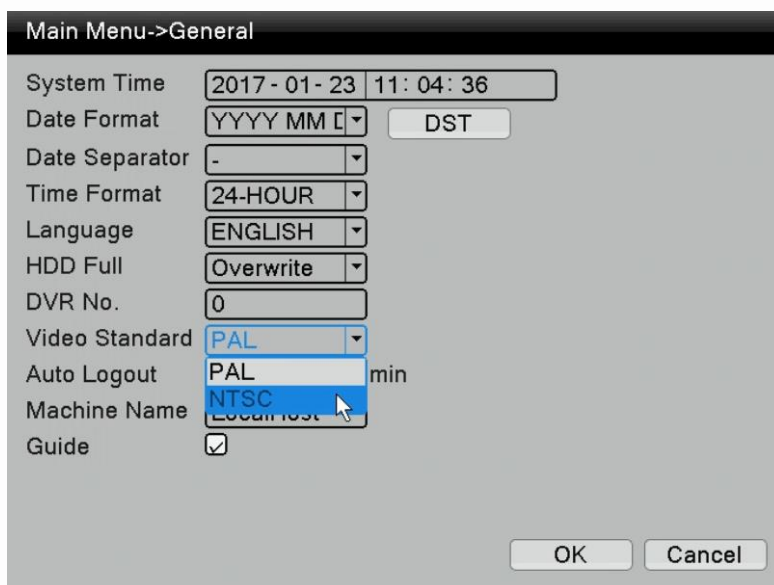
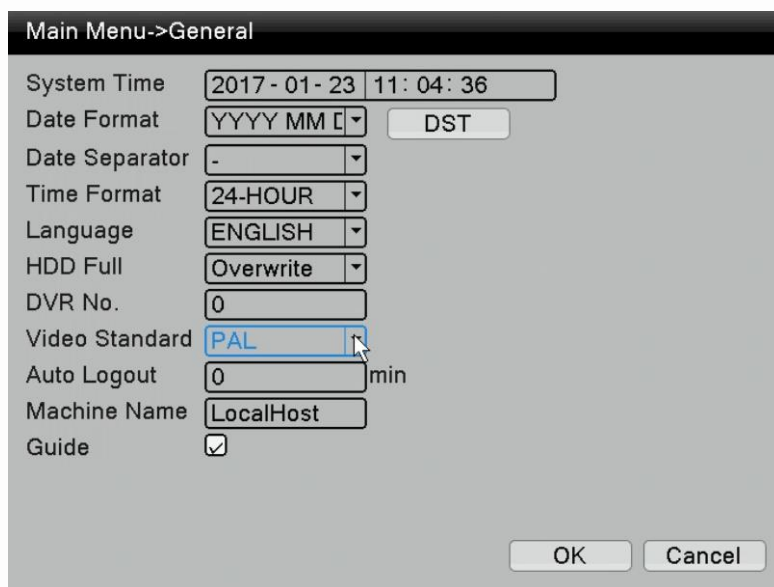
1. Presione botón derecho e ingrese al Menú Principal



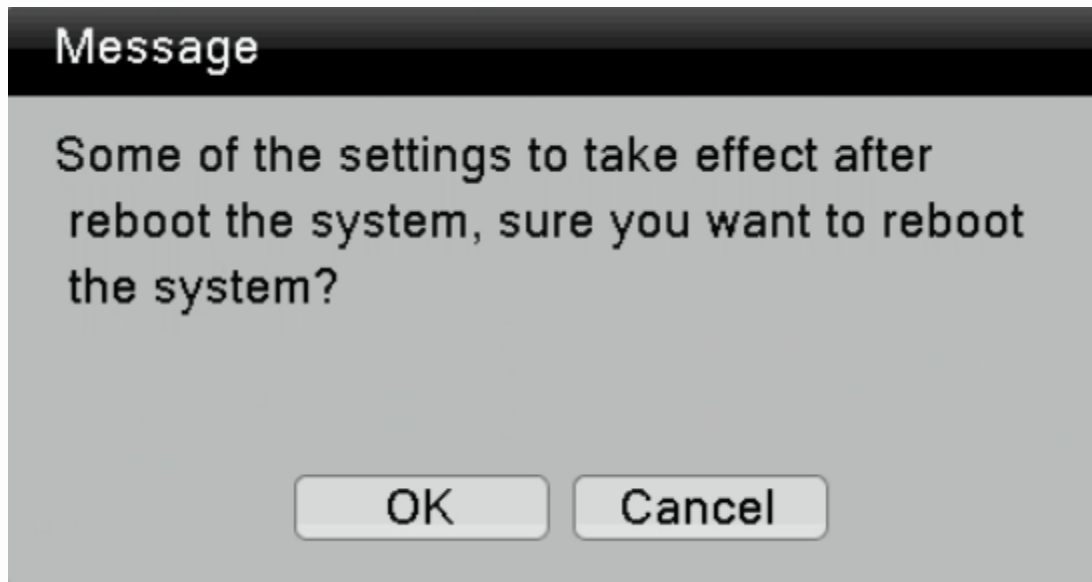
2. Seleccione el botón "System" (Sistema). Luego, seleccione el botón "General".



3. Se visualizará la opción "Video Estándar" (Video Estándar). Por favor, cambie la opción de PAL a NTSC.



4. Presione OK para guardar los cambios y reinicie DVR.



Y ahora ya podrá visualizar sus cámaras.

Any other questions you can contact our
Technical Support Department at support@logan-cam.com

Cualquier otra consulta se puede comunicar al
departamento de soporte técnico por medio
del correo: support@logan-cam.com



<http://www.logan-cam.com/>