



DATA SHEET CCTV

SECURITY CAMERA

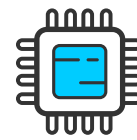
HD Dome Camera 1080P

TECHNICAL SPECIFICATIONS FOR THE CAMERA

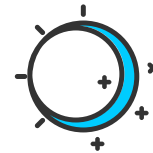
Image Sensor	1/2.7" CMOS/1080P
Camera Resolution	2 Megapixel
Effective Pixels	1920(H) x 1080(V)
Infrared LED	36 pcs
Lens Mount	2.8-12mm
Format	AHD/CVI/TVI/CBVS
Operation Mode	UTC
Video Output	1CH BNC
Field of View	70° Degrees
Minimum Illumination	0 LUX (IR on)
Minimum Illumination for Night Vision Color	1 LUX (IR on)
IR Filter	Yes
Night Vision Distance	82ft / 25m
Operative Temperature	14° ~ 122°F/ - 10° ~ 50°C
Ingress Protection	IP66
Power Supply	DC 12V/320mA (IR on)



MODEL: LX2WMCR



1/2.7" CMOS



Night Vision



Weatherproof



*Reference Picture

