

# SECURITY CAMERA

## Bullet 2MPX Wireless Camera

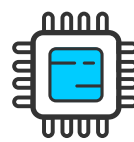
### TECHNICAL SPECIFICATIONS FOR THE CAMERA

#### CAMERA

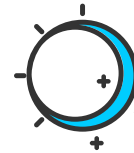
Image Sensor	1/2.8" CMOS Sensor
Camera Resolution	2 Megapixel
Infrared LED	3 pcs LED ARRAY
Lens Mount	4mm fixed lens
Format	Wireless IP
Field of View	60° Degrees
Minimum Illumination	0.01 LUX (IR on)
IR Cut Filter	Yes
Night Vision Distance	82ft / 25m
Operative Temperature	14° ~ 122°F/ - 10° ~ 50°C
Ingress Protection	IP66
Power Supply	DC 12V/1A (IR on)



### MODEL: LW2CBCA



1/2,8 CMOS



Day and night



Motion  
Detection



Weatherproof



\*Reference Picture

