

# IP CAMERA PTZ 720P USER MANUAL

English / Español  
Model: L-I720-DP



Night Vision



Anti Vandal

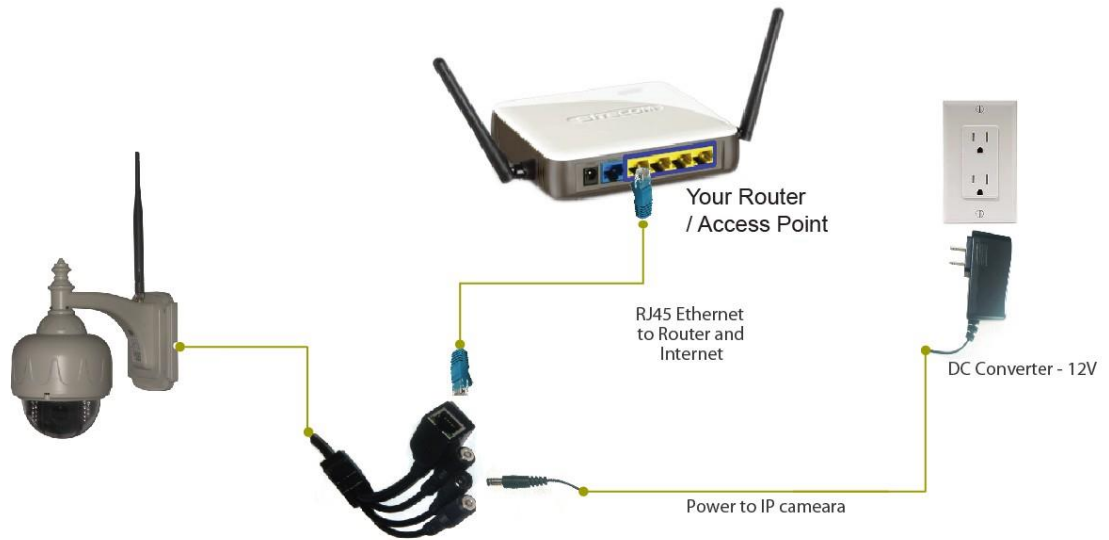


Weatherproof



# ENGLISH SECTION

## 1. Connect the hardware



## 2. Download and install the App

- 1) Android users can search "Logan IPC" from PlayStore to download the App.



- 2) iOS users can download "Logan IPC" from the AppStore.

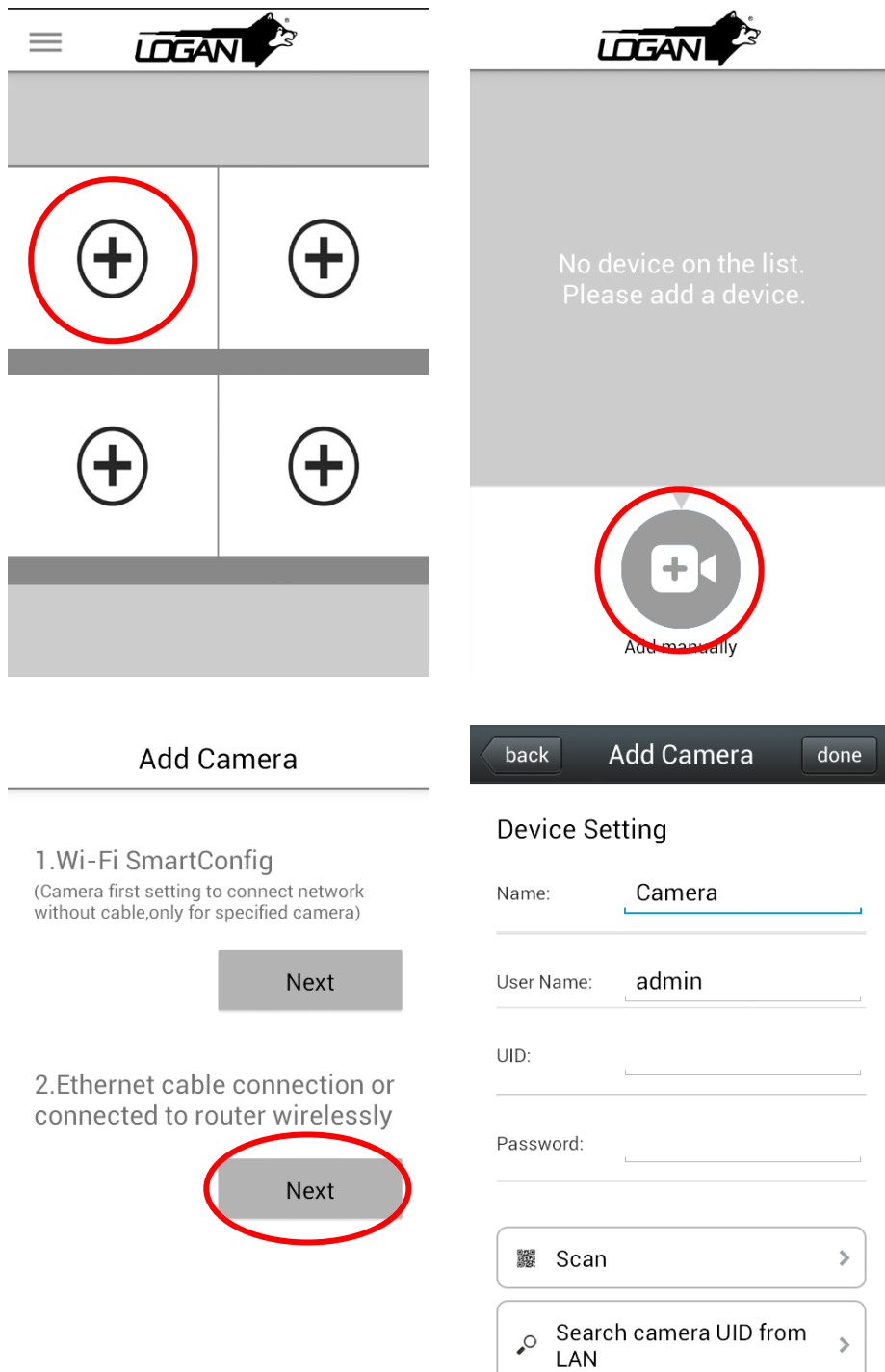


3) After installed, the icon will display on the mobile phone.

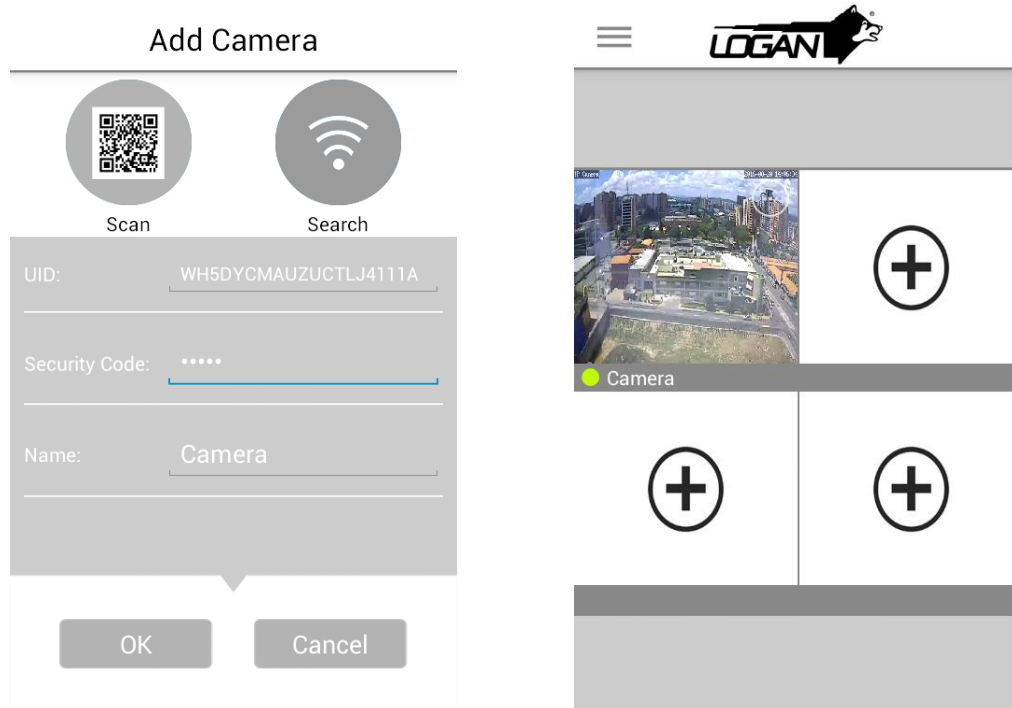
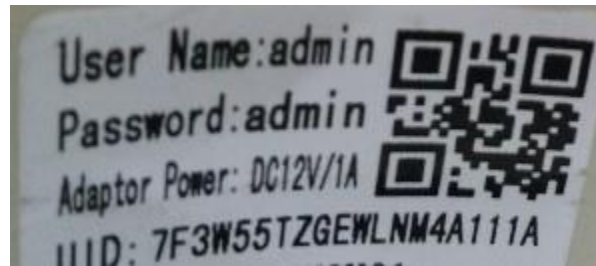


### 3. Add camera

1) After connecting the camera with a router through a network cable, run the "Logan IPC" App. Select + on the Home screen, then select "Add Manually". Please click "Next" on the second option "Ethernet cable connection or connected to router wirelessly".

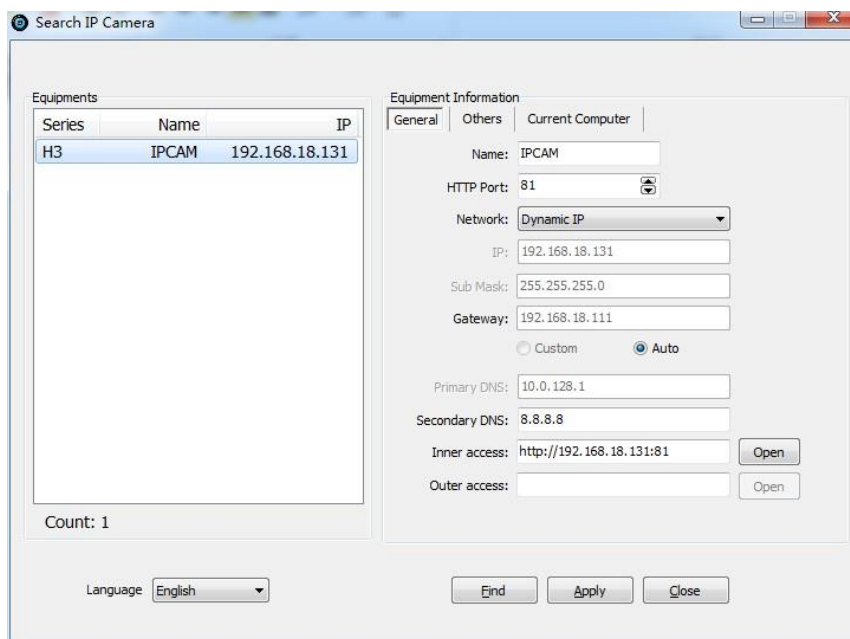


2) Click "QR code" to scan the QR code on the camera label to add camera or click "LAN Search" to search an IP camera in the same LAN and add camera.



#### 4. Visit camera on PC

1) After connecting the camera with a router. Run "search IP camera" to search for an IP camera on computer in the same LAN.



2) Input the IP camera IP address and port in the address bar of your Internet browser (*Example: 192.168.1.28:80*) Input user name and password to login. (Default user name: admin, password: admin)

---

## IP Camera

---

For IE, FireFox, Google, Safari Browser

**Sign in**

Mobile Phone (For Browser that supports Javascript)

**Sign in**

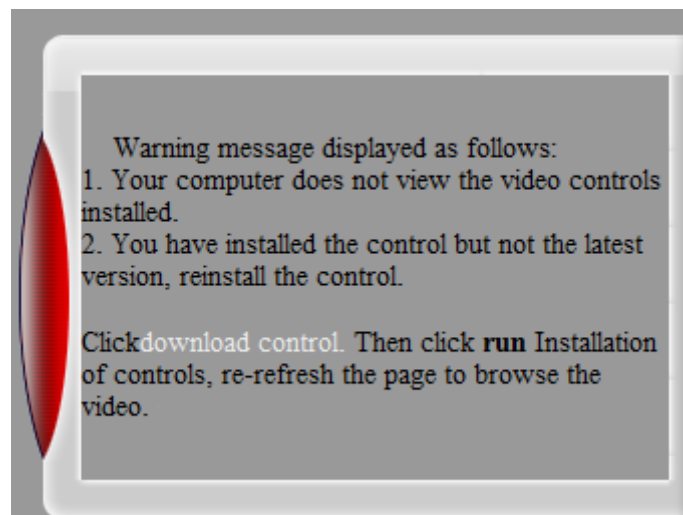
iPod touch / iPhone 2G, 3G, 3GS, 4 and iPad dedicated

**Sign in**

Language

do not show next time

3) If you use the Internet Explorer browser, please first download the control plugin. It will display the main screen after installed successfully. Click options to enter into the main menu, there are Network Setting/WIFI Setting/EMAIL Setting/Motion Alarm Setting in the main menu.



**IP Camera** 2016-03-02 11:48:50

Stream: First stream

Playback Zoom Focus

Record Snapshot Listen

Talk GO Set

Path Preset 1

Alarm Audio: No

Alarm Record: No

Options

The image shows a software interface for an IP camera. On the left is a large video window displaying a camera feed of a dark, industrial-looking area with some structural elements. The top-left corner of the video window says "IP Camera" and the top-right corner shows the date and time "2016-03-02 11:48:50". To the right of the video window is a vertical control panel. At the top of this panel is the title "IP Camera". Below the title is a dropdown menu set to "Stream: First stream". Underneath are three small icons representing different camera views: a single square, a 2x2 grid, and a 3x3 grid. A large, circular, metallic-looking directional pad with four arrows is positioned below these icons. Underneath the directional pad are two small square buttons with left and right arrows. The next section contains three buttons labeled "Playback", "Zoom", and "Focus". Below these are three more buttons: "Record", "Snapshot", and "Listen". The next row has three buttons: "Talk", "GO", and "Set". Below that is a "Path" button followed by a dropdown menu currently showing "Preset 1". The next two rows each contain a label and a dropdown menu: "Alarm Audio: No" and "Alarm Record: No". At the very bottom of the control panel is a button labeled "Options" with a gear icon above it.



# SECCIÓN ESPAÑOL



## 1. Conecte el hardware



## 2. Descargue e instale la aplicación

- 1) Usuarios de Android pueden buscar "Logan IPC" en PlayStore para descargar la aplicación.



- 2) Usuario de iOS pueden descargar "Logan IPC" desde la AppStore.

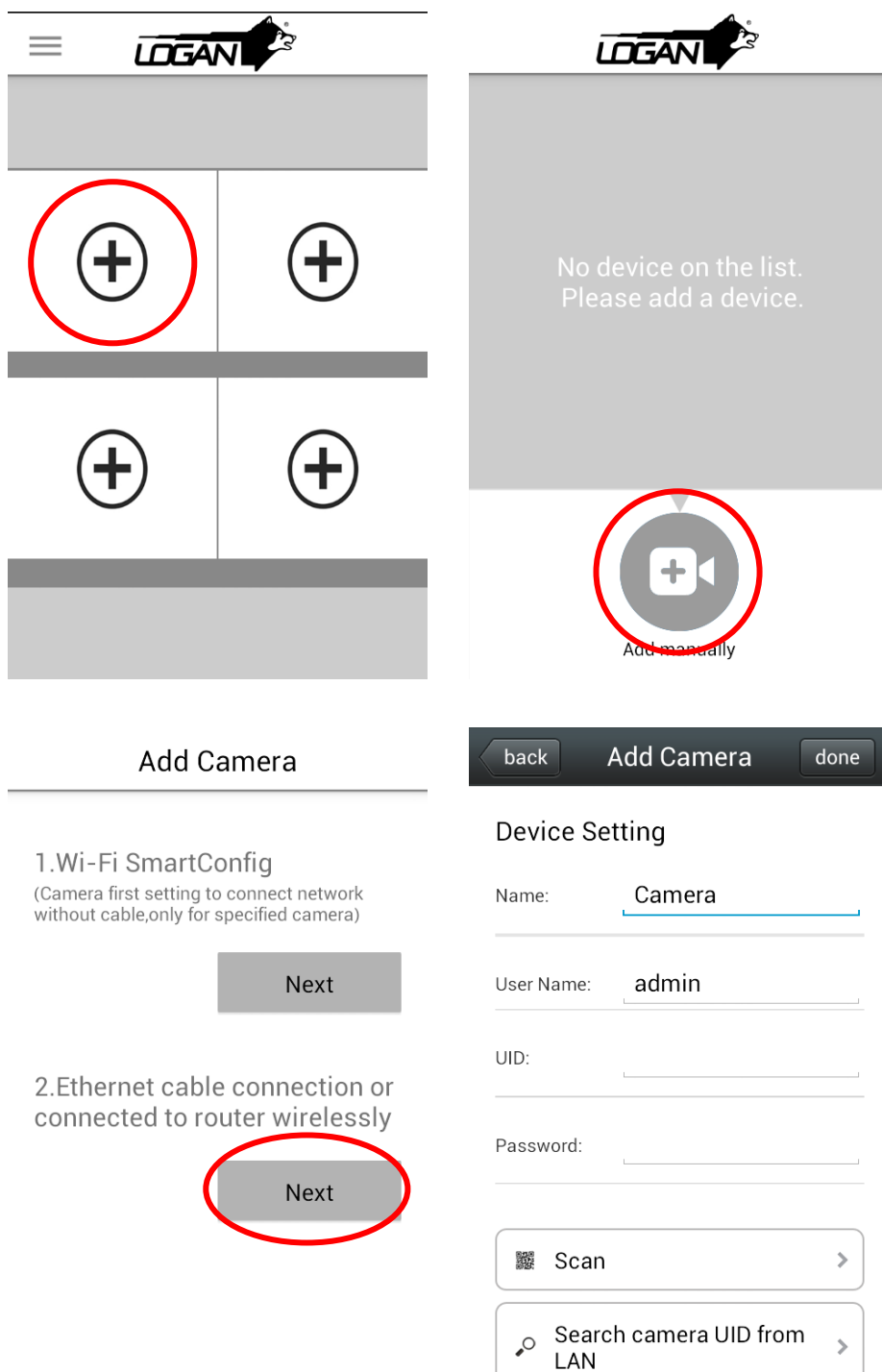


3) Después de instalada, el icono será mostrado en su teléfono móvil.

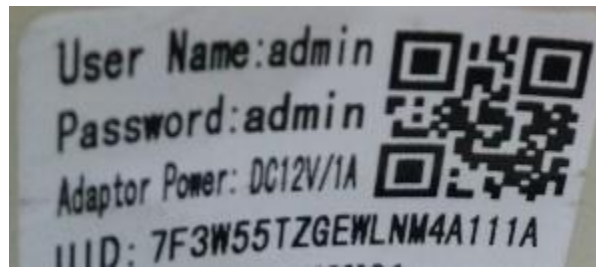


### 3. Añadir cámara

1) Después de conectar la cámara con un router a través de un cable de red, ejecute la aplicación "Logan IPC". Seleccione + en la pantalla de inicio, luego seleccione "Add Manually". Por favor haga click en "Next" en la segunda opción "Ethernet cable connection or connected to router wirelessly".



2) Haga Click en "QR code" para escanear el código QR en la etiqueta de la cámara para añadir la cámara o haga click en "LAN Search" para buscar una cámara IP en la misma LAN y añadir la cámara.



**Add Camera**

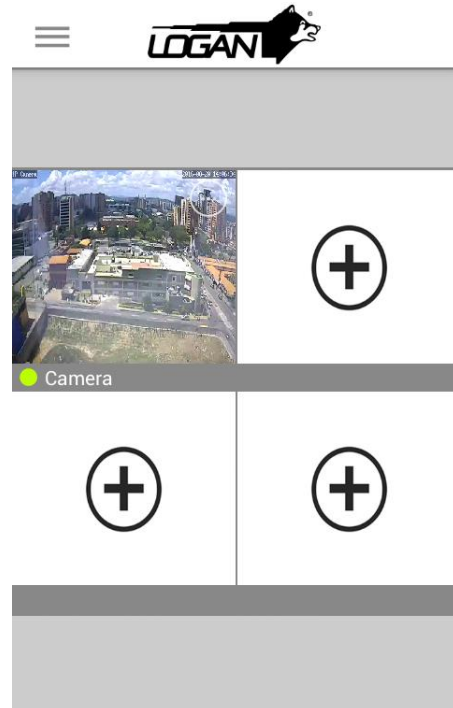
Scan Search

UID: WH5DYCMAUZUCLJ4111A

Security Code: \*\*\*\*

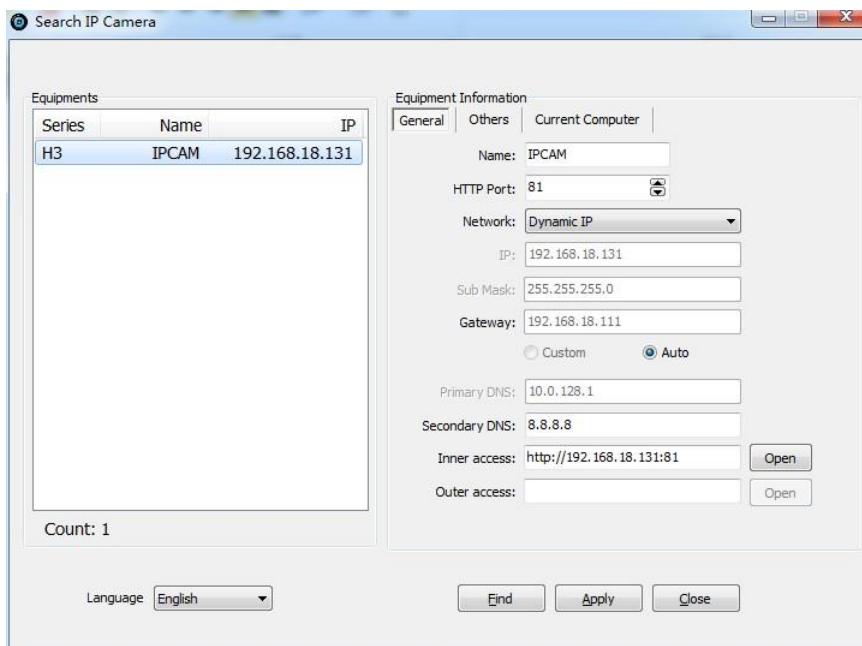
Name: Camera

OK Cancel



#### 4. Visite la cámara en PC

1) Después de conectar la cámara con un router, ejecute "search IP camera" para buscar una cámara IP en la computadora en la misma LAN.



2) Introduzca la dirección IP de la cámara IP y el Puerto en la barra de direcciones de su navegador de Internet (*Ejemplo: 192.168.1.28:80*). Introduzca el nombre de usuario y contraseña para ingresar. (Nombre de usuario por defecto: admin, contraseña: admin).

---

## IP Camera

---

For IE, FireFox, Google, Safari Browser

**Sign in**

Mobile Phone (For Browser that supports Javascript)

**Sign in**

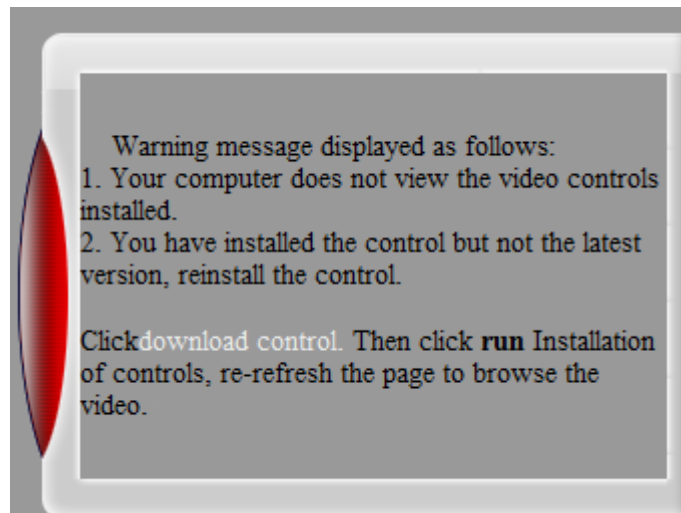
iPod touch / iPhone 2G, 3G, 3GS, 4 and iPad dedicated

**Sign in**

Language

do not show next time

3) Si usted usa el navegador Internet Explorer, por favor primero descargue el plugin de control. El mismo mostrará la pantalla principal después de haberse instalado de manera exitosa. Haga click en opciones para entrar al menú principal, ahí encontrara Network Setting/WIFI Setting/EMAIL Setting/Motion Alarm Setting.



IP Camera

2016-03-02 11:48:50

Stream: First stream

Playback Zoom Focus

Record Snapshot Listen

Talk GO Set

Path Preset 1

Alarm Audio: No

Alarm Record: No

Options

The image shows a software interface for an IP camera. The main area is a video feed of a building with a red lens on the left. The interface includes a title bar, a timestamp, a stream selector, a view mode selector, a pan/tilt/zoom control, and various function buttons like Playback, Zoom, Focus, Record, Snapshot, Listen, Talk, GO, Set, Path, Preset, Alarm Audio, Alarm Record, and Options.

Any other questions you can contact our  
Technical Support Department at [support@logan-cam.com](mailto:support@logan-cam.com)

Cualquier otra consulta se puede comunicar al  
Departamento de Soporte Técnico a través del correo  
electrónico [support@logan-cam.com](mailto:support@logan-cam.com)



<http://www.logan-cam.com>