

# QUICK GUIDE

## Synchronize IP cameras to XVR Logan

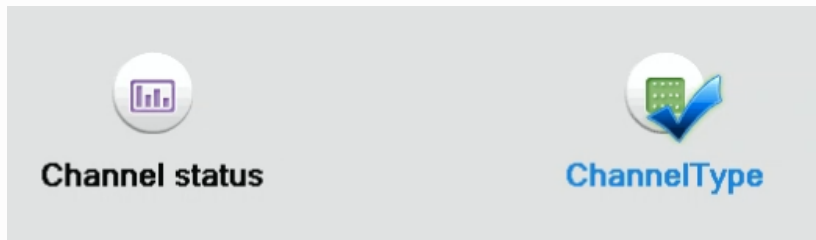
For the next example, we will use the model Logan L-I21080-BM (HD Motorized Lens 2MPX 1080P WiFi IP Camera) and the DVR Logan LX4CA (XVR 4CH AHD 1080N).

The first thing you must do is change the way of input of our DVR to **Hybrid or NVR**.

In the Main Menu of your DVR, enter to the System section and select the Digital option



Select one type compatible with the resolution of the IP camera that you like to configure.  
Then press "OK" and wait for the DVR restart.



Main Menu->Digital->ChannelType

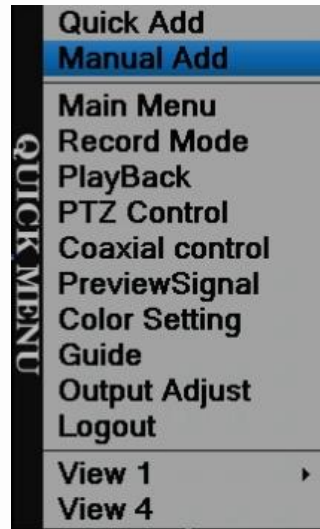
Analog channels				Digital channels			
1080P	1080N	720P	D1	1080P	960P	720P	D1
<input type="checkbox"/>	.	4	.	.	.	.	.
<input checked="" type="checkbox"/>	.	2	.	2	.	.	.
<input type="checkbox"/>	.	.	.	4	.	.	.

Maximum Playback large: 1

OK Cancel

Press right click and then select the Manual Add option.

Press the "Search" button, find and select on the list the IP camera identified as ONVIF IPCAM.



Remote Device

Online Equipment

3	■	IP Address	Port	Protocol	MAC	Add	Edit
1	■	192.168.1.12	34567	NETIP	00:12:15:5d:48:72	+	✍
2	■	192.168.1.112	8080	ONVIF	00:E0:F8:24:56:52	+	✍
3	■	192.168.1.125	8018	ONVIF	30:cd:a7:35:2a:f0	+	✍

Search Add Quick Add Protocol All

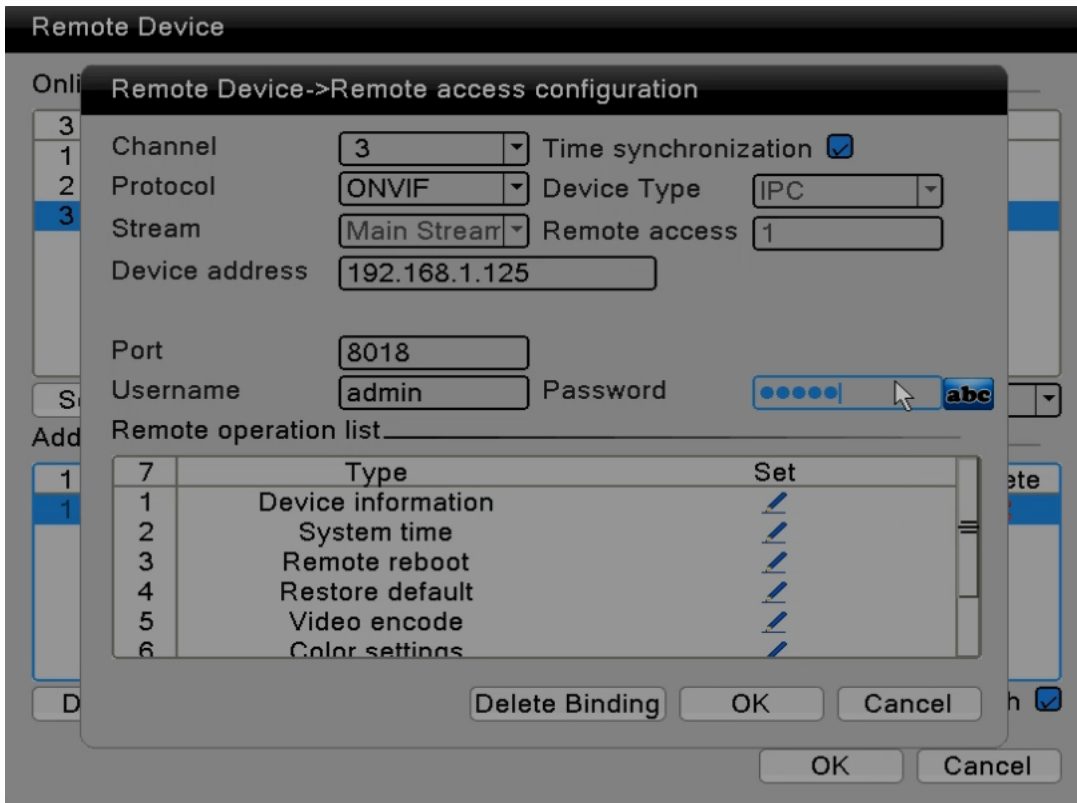
Added device

0	Channel	Device Type	IP Address	Protocol	Edit	Delete
---	---------	-------------	------------	----------	------	--------

Delete Manual Add AutoSearch

OK Cancel

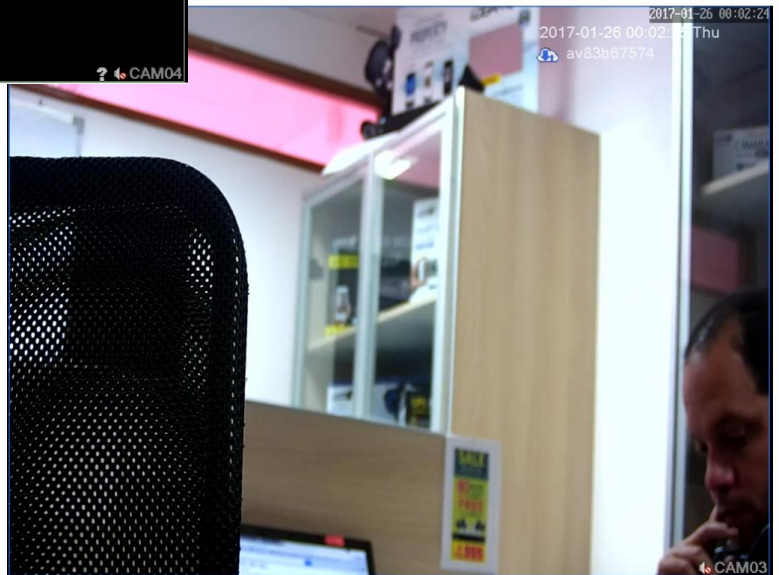
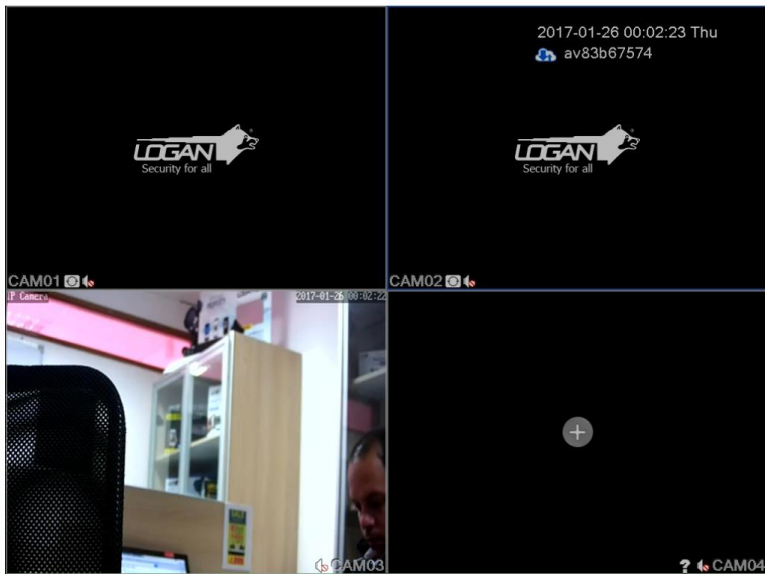
Once you select the camera, press "Add". If you press the Edit icon you can enter the password of the camera (User by default is admin and the password is admin)



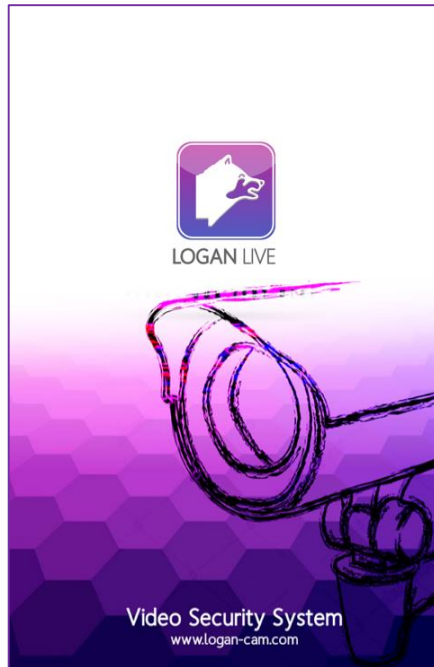
To enter this data, you must press the "OK" button to save this changes and press "OK" again.

You have finished adding your IP camera.

If you want to see it in full screen, click double button on the camera.



You can watch the camera remotely through the DVR using the Logan Live application.



Any other questions you can contact our  
Technical Support Department at [support@logan-cam.com](mailto:support@logan-cam.com)



<http://www.logan-cam.com/>