

QUICK GUIDE

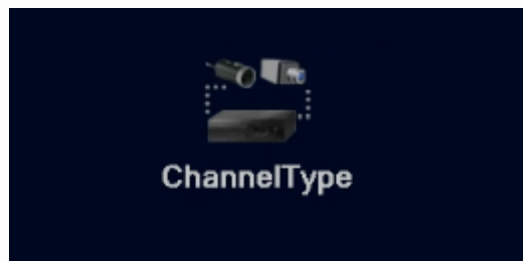
Synchronize IP cameras to DVR AHD LITE Logan

For the next example, we will use the model Logan L-I1720-DP (PTZ Camera 720P 1Mpixel) and the DVR Logan L-DX841M-ND (DVR 8CH All In One 1080N).

The first thing you must do is change the way of input of our DVR to **Hybrid** or **NVR**.



In the Main Menu of your DVR, enter to the System section and select the Digital option

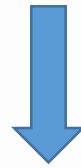


Select one type compatible with the resolution of the IP camera that you like to configure.
Then press "OK" and wait for the DVR restart.

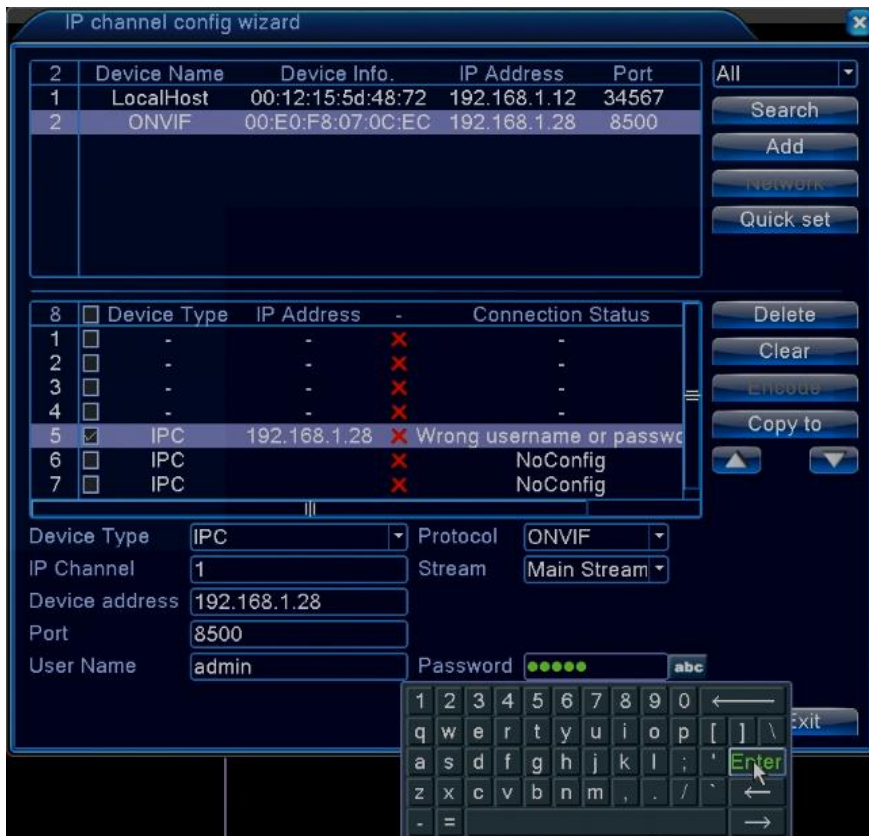




Place the cursor of the mouse on the channel where you like the IP camera until you can see the "+" sign and then click to access the setup menu.



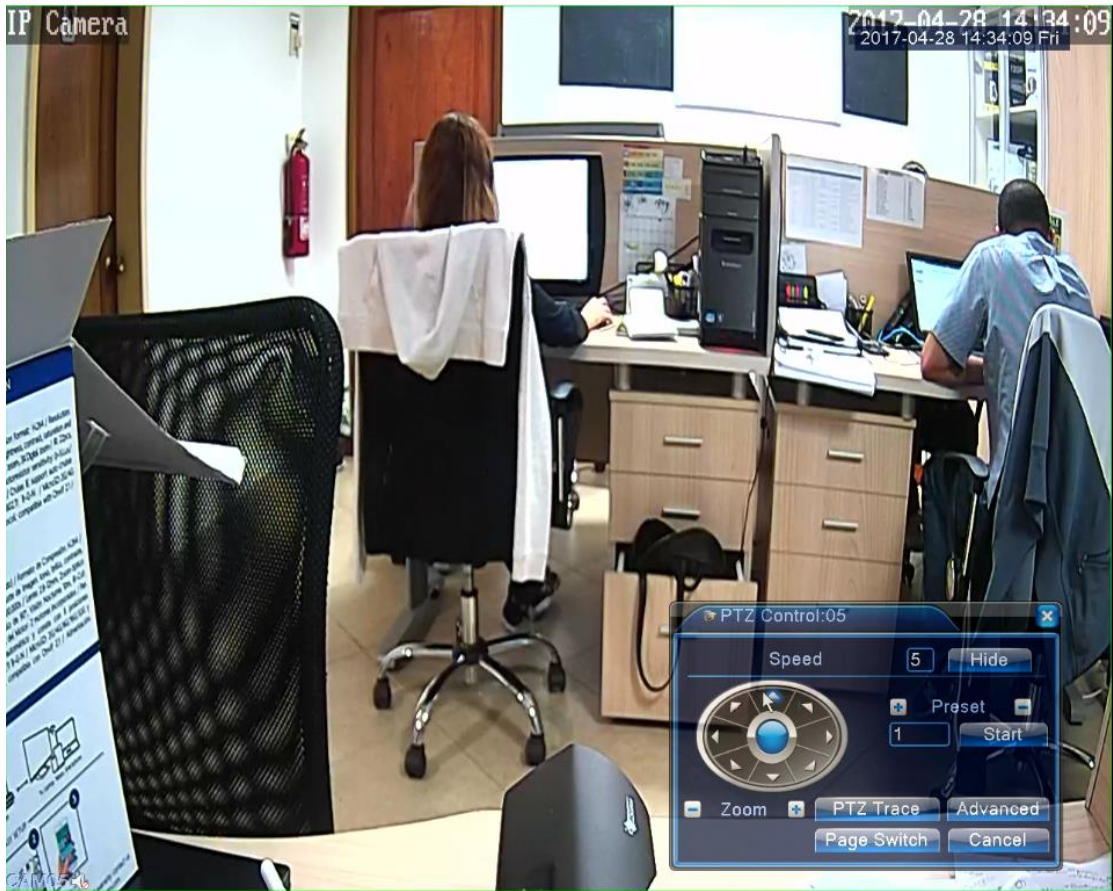
Press the "Search" button, find and select on the list the IP camera identified as ONVIF IPCAM.



Once you select the camera, press **"Add"** and enter the password of the camera (User by default is **admin** and the password is **admin**)

To enter this data you must press the **"Apply"** button to save this changes and press **"Exit"**.

Press the right click to enable the "PTZ Control" function and by this way to manipulate the different camera functions.



You can watch the camera remotely through the DVR using the Logan Live application.



Any other questions you can contact our
Technical Support Department at support@logan-cam.com



<http://www.logan-cam.com/>