

SECURITY CAMERA

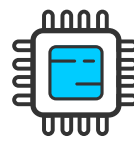
Bullet IMPX TVI Camera

TECHNICAL SPECIFICATIONS FOR THE CAMERA

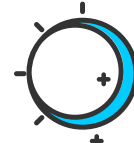
Image Sensor	1/4" OV9732 CMOS/720P
Camera Resolution	1 Megapixel
Effective Pixels	1280(H) x 720(V)
Infrared LED	36 pcs
Lens Mount	3,6mm
Format	TVI
Field of View	60° Degrees
Minimum Illumination	0 LUX (IR on)
IR Cut Filter	Yes
Night Vision Distance	82ft / 25m
Shutter Speed	NTSC (1/60 sec-1/100,000 sec)
Operative Temperature	14° ~ 122°F/ - 10° ~ 50°C
Ingress Protection	IP66
Power Supply	DC 12V/320mA (IR on)



MODEL: LT1A



1/4 CMOS



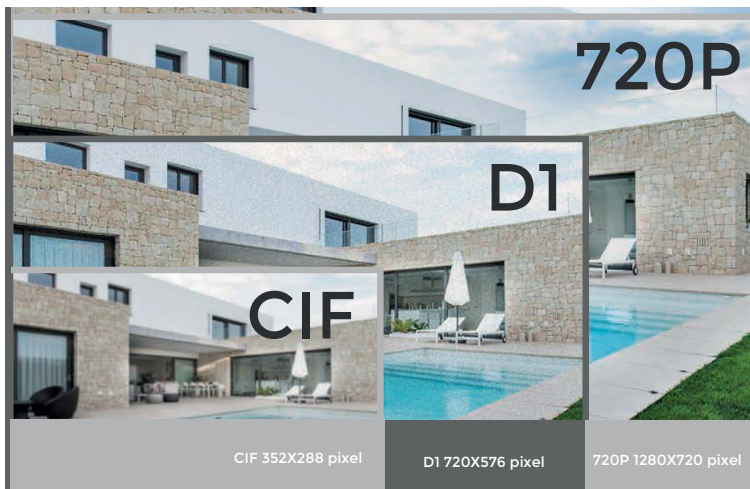
Day and night



Motion
Detection



Weatherproof



*Referential image

