

Motorized Zoom IP Camera 1080P USER MANUAL

English / Español
Model: L-I21080-BM



Night Vision



Anti Vandal

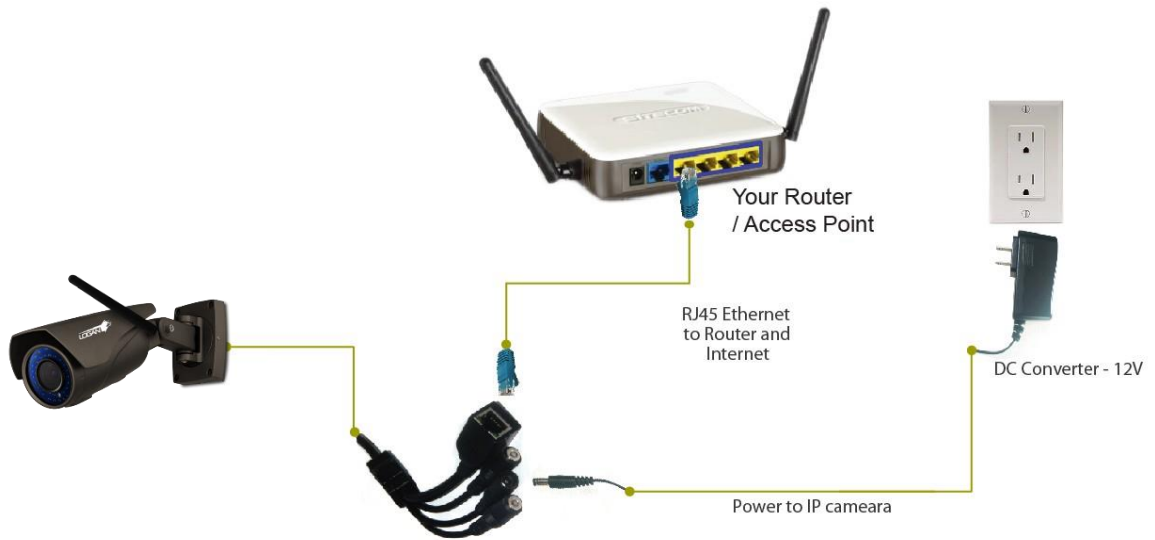


Weatherproof



ENGLISH SECTION

1. Connect the hardware



2. Download and install the App

- 1) Android users can search "Logan IPC" from PlayStore to download the App.



- 2) iOS users can download "Logan IPC" from the AppStore.

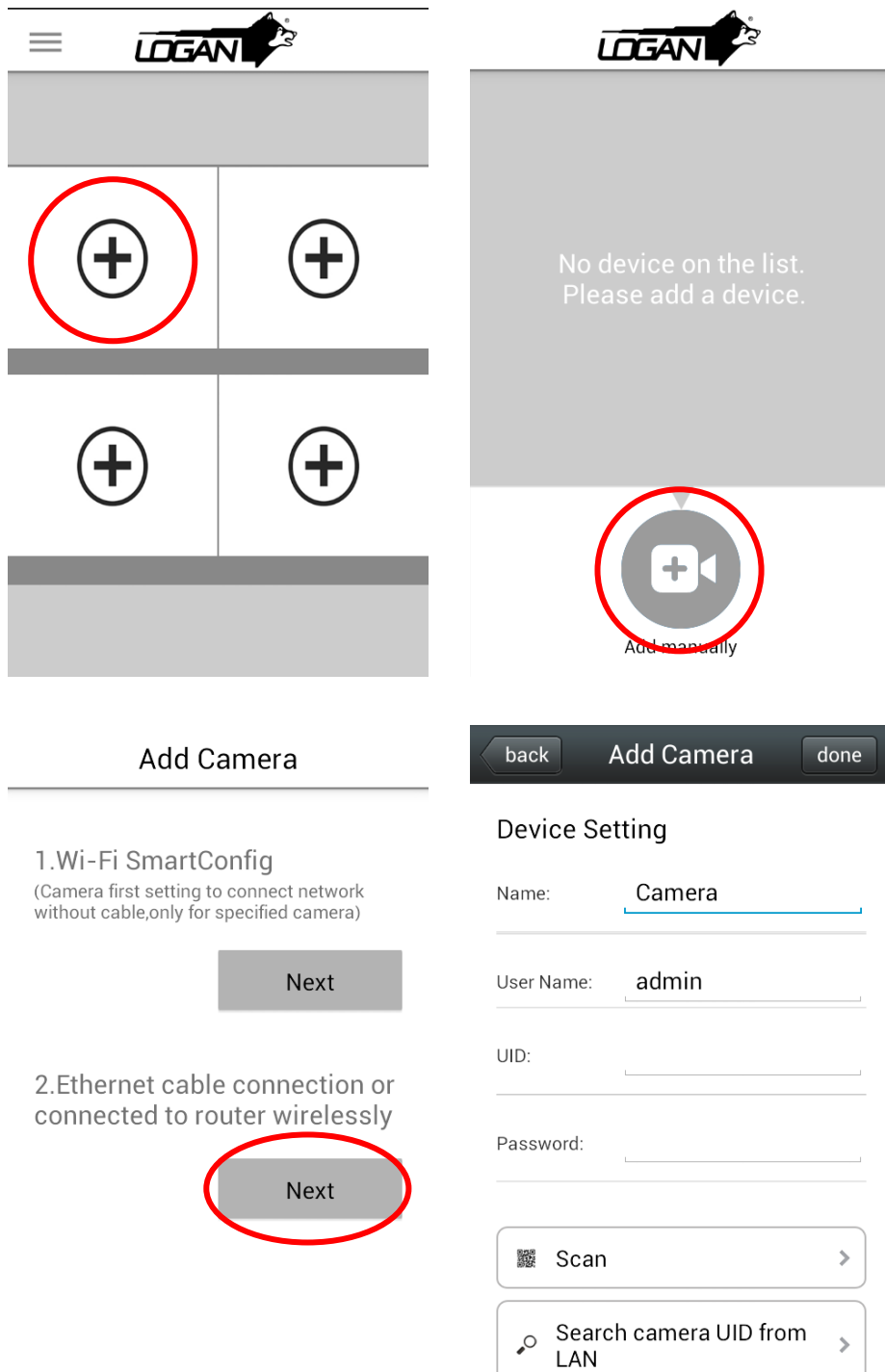


3) After installed, the icon will display on the mobile phone.

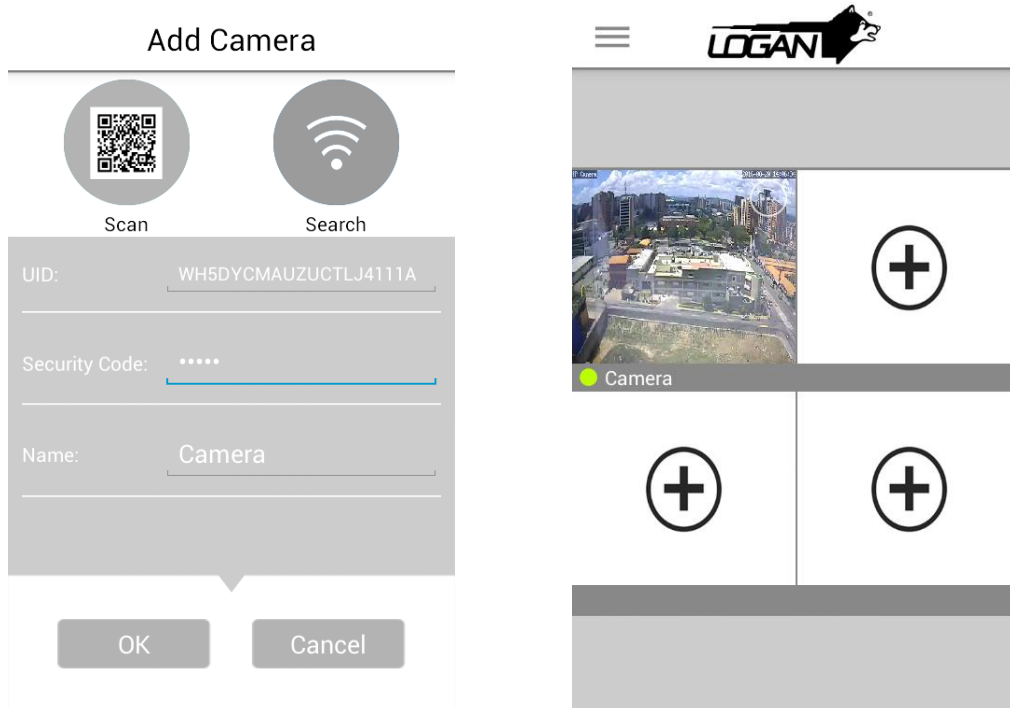
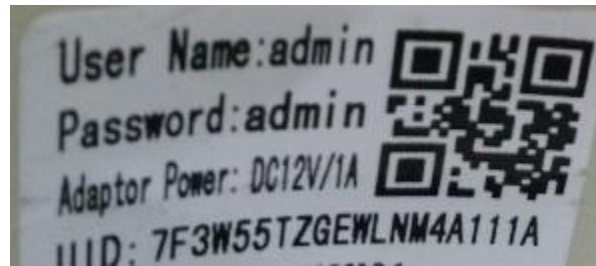


3. Add camera

1) After connecting the camera with a router through a network cable, run the "Logan IPC" App. Select + on the Home screen, then select "Add Manually". Please click "Next" on the second option "Ethernet cable connection or connected to router wirelessly".

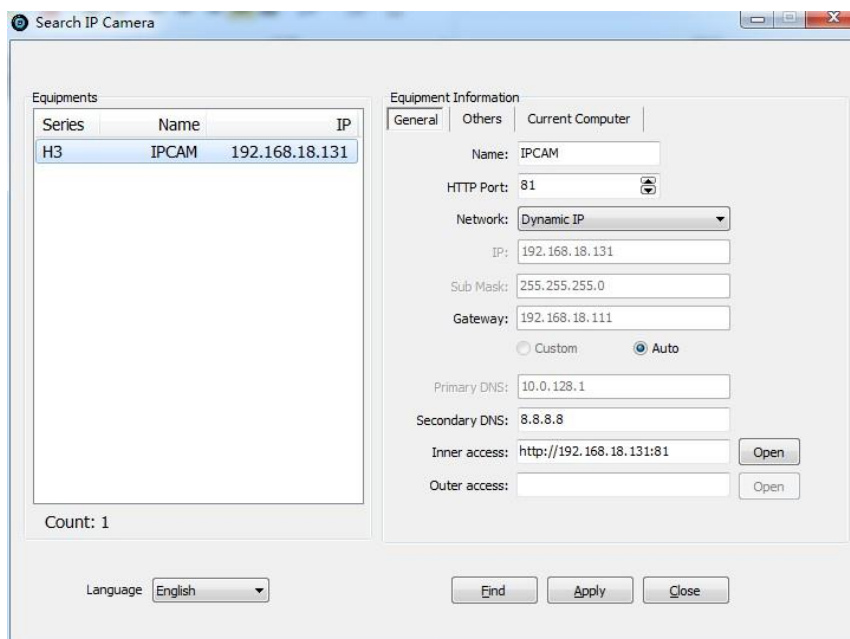


2) Click "QR code" to scan the QR code on the camera label to add camera or click "LAN Search" to search an IP camera in the same LAN and add camera.



4. Visit camera on PC

1) After connecting the camera with a router. Run "search IP camera" to search for an IP camera on computer in the same LAN.



2) Input the IP camera IP address and port in the address bar of your Internet browser (*Example: 192.168.1.28:80*). Input user name and password to login. (Default user name: admin, password: admin)

IP Camera

For IE, FireFox, Google, Safari Browser

Sign in

Mobile Phone (For Browser that supports Javascript)

Sign in

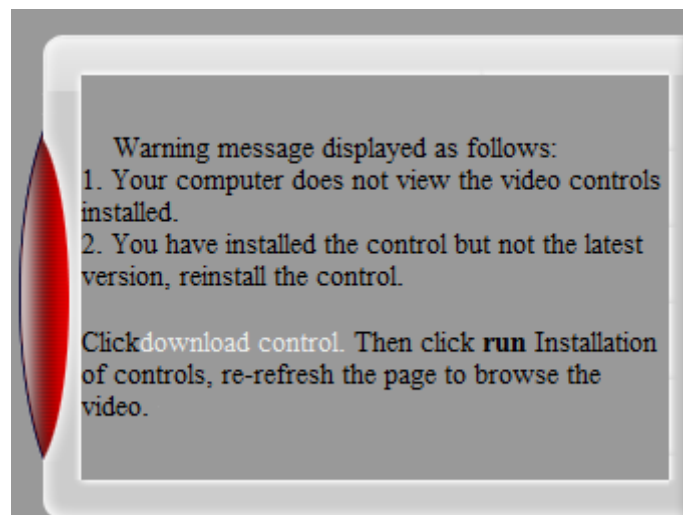
iPod touch / iPhone 2G, 3G, 3GS, 4 and iPad dedicated

Sign in

Language

do not show next time

3) If you use the Internet Explorer browser, please first download the control plugin. It will display the main screen after installed successfully. Click options to enter into the main menu, there are Network Setting/WIFI Setting/EMAIL Setting/Motion Alarm Setting in the main menu.



IP Camera 2016-03-02 11:48:50

Stream: First stream

Playback Zoom Focus

Record Snapshot Listen

Talk GO Set

Path Preset 1

Alarm Audio: No

Alarm Record: No

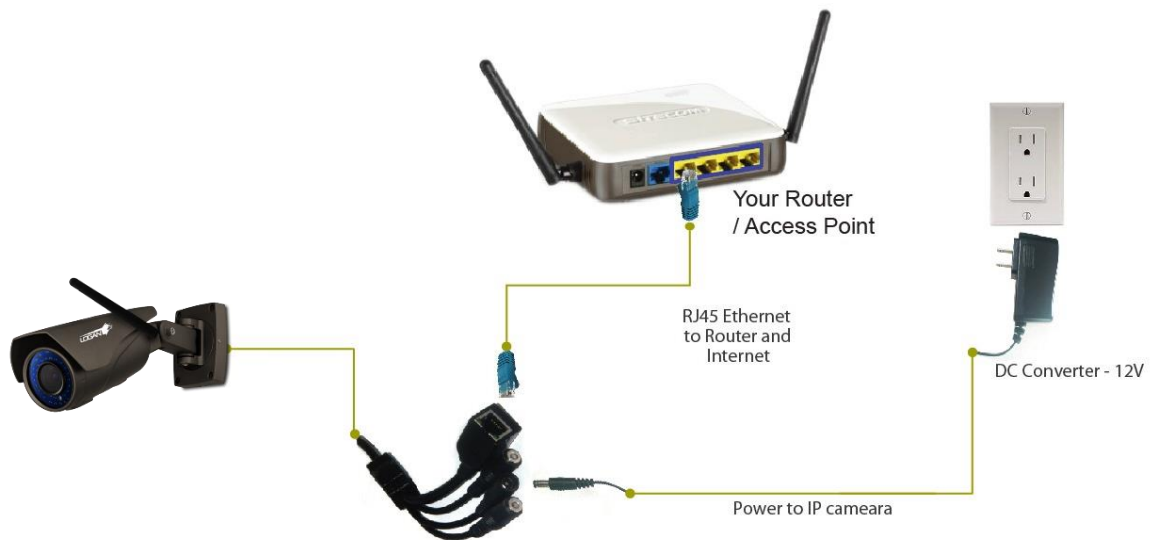
Options

The image displays a web-based interface for an IP camera. The main area is a video feed showing a building with a dark roof and light-colored walls. The interface includes a control panel on the right side with various buttons and a central navigation pad. The top left corner of the video feed area shows 'IP Camera' and the top right corner shows the date and time '2016-03-02 11:48:50'. The control panel includes a stream selector, a 3x3 grid view selector, a central navigation pad with a red center, and buttons for Playback, Zoom, Focus, Record, Snapshot, Listen, Talk, GO, Set, Path, Preset 1, Alarm Audio, Alarm Record, and Options.



SECCIÓN ESPAÑOL

1. Conecte el hardware



2. Descargue e instale la aplicación

- 1) Usuarios de Android pueden buscar "Logan IPC" en PlayStore para descargar la aplicación.



- 2) Usuario de iOS pueden descargar "Logan IPC" desde la AppStore.

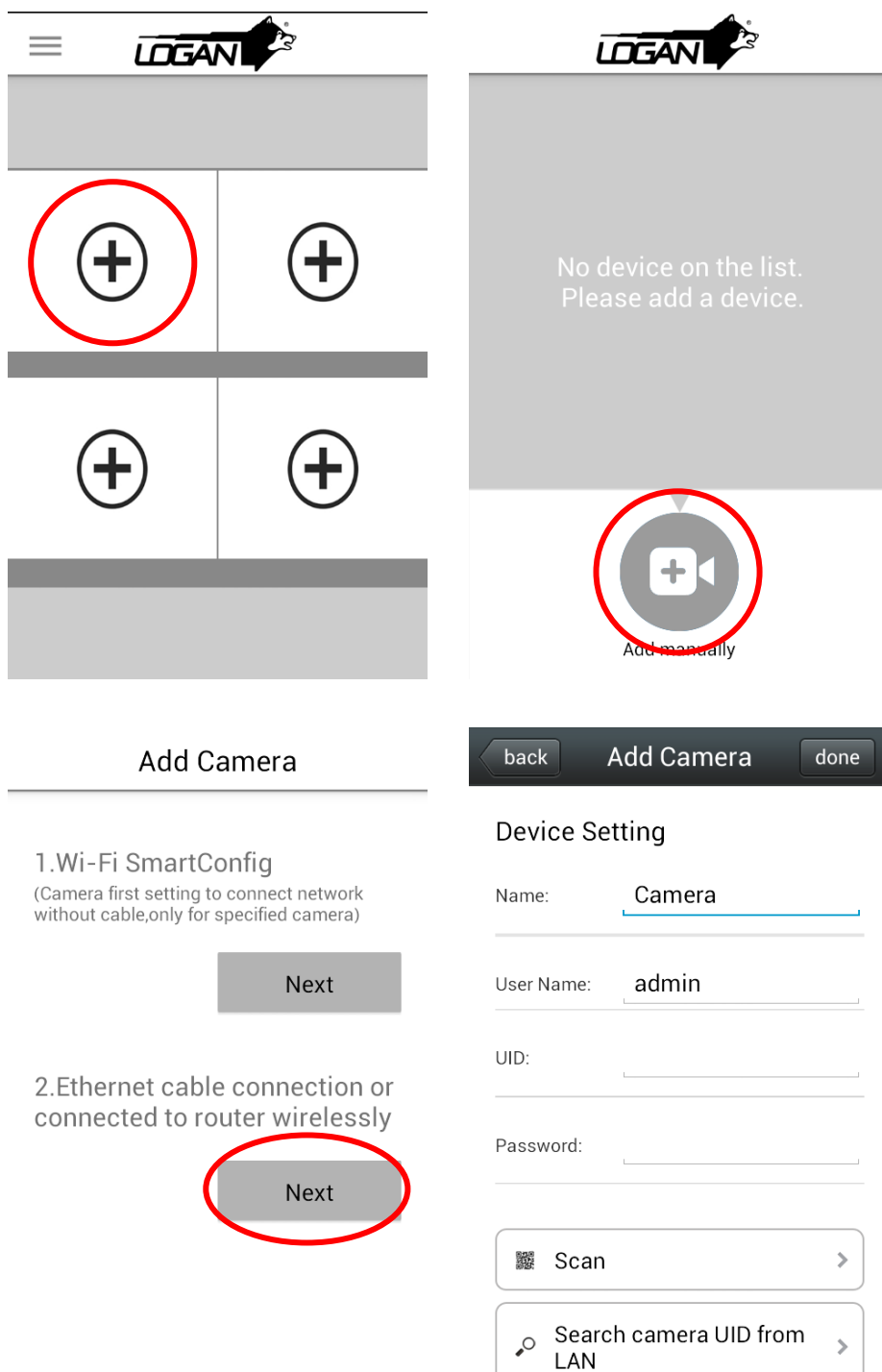


3) Después de instalada, el icono será mostrado en su teléfono móvil.

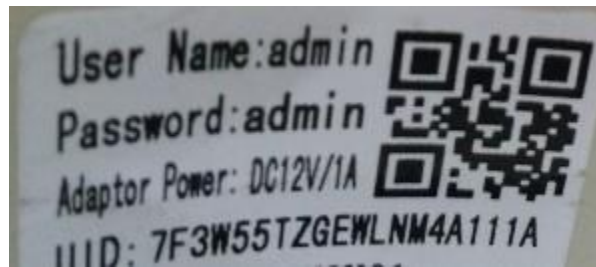


3. Añadir cámara

1) Después de conectar la cámara con un router a través de un cable de red, ejecute la aplicación "Logan IPC". Seleccione + en la pantalla de inicio, luego seleccione "Add Manually". Por favor haga click en "Next" en la segunda opción "Ethernet cable connection or connected to router wirelessly".



2) Haga Click en "QR code" para escanear el código QR en la etiqueta de la cámara para añadir la cámara o haga click en "LAN Search" para buscar una cámara IP en la misma LAN y añadir la cámara.



Add Camera

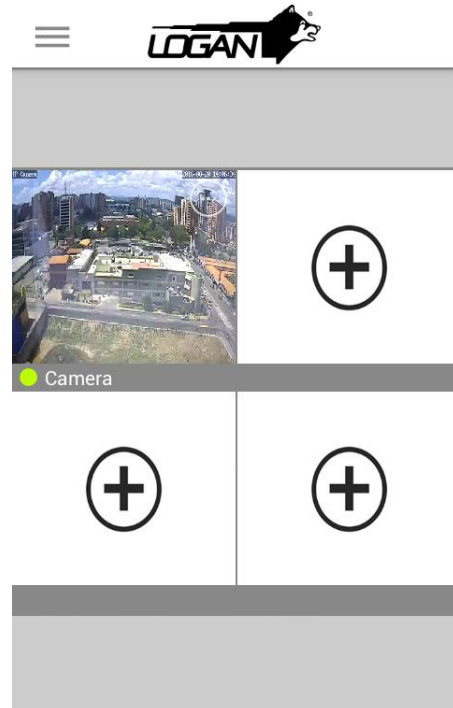
Scan Search

UID: WH5DYCMAUZUCLJ4111A

Security Code: ****

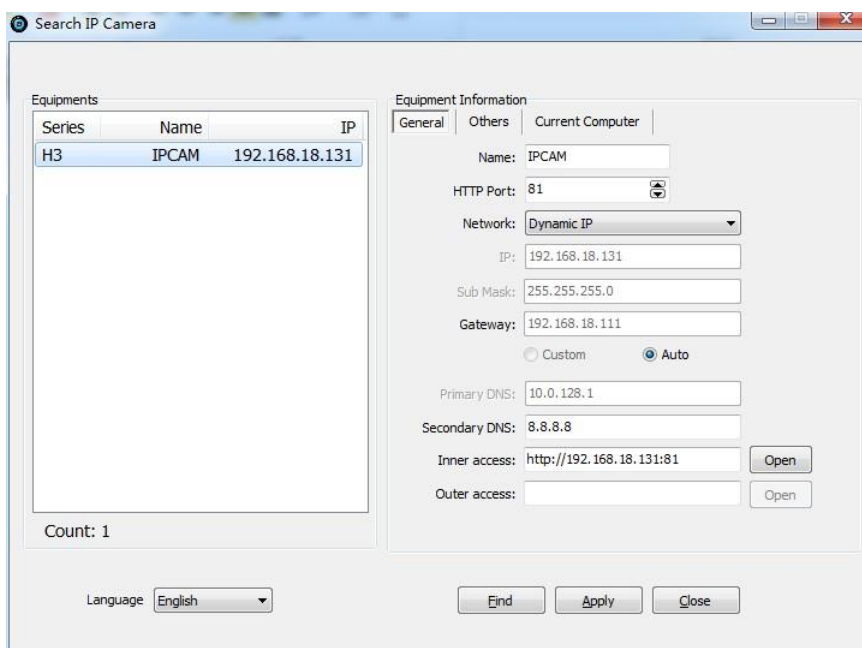
Name: Camera

OK Cancel



4. Visite la cámara en PC

1) Después de conectar la cámara con un router, ejecute "search IP camera" para buscar una cámara IP en la computadora en la misma LAN.



2) Introduzca la dirección IP de la cámara IP y el Puerto en la barra de direcciones de su navegador de Internet (*Ejemplo: 192.168.1.28:80*). Introduzca el nombre de usuario y contraseña para ingresar. (Nombre de usuario por defecto: admin, contraseña: admin).

IP Camera

For IE, FireFox, Google, Safari Browser

Sign in

Mobile Phone (For Browser that supports Javascript)

Sign in

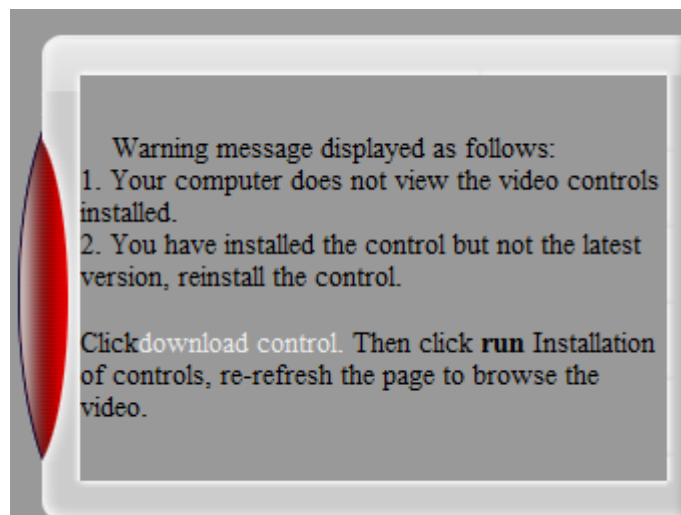
iPod touch / iPhone 2G, 3G, 3GS, 4 and iPad dedicated

Sign in

Language

do not show next time

3) Si usted usa el navegador Internet Explorer, por favor primero descargue el plugin de control. El mismo mostrará la pantalla principal después de haberse instalado de manera exitosa. Haga click en opciones para entrar al menú principal, ahí encontrara Network Setting/WIFI Setting/EMAIL Setting/Motion Alarm Setting.



IP Camera 2016-03-02 11:48:50

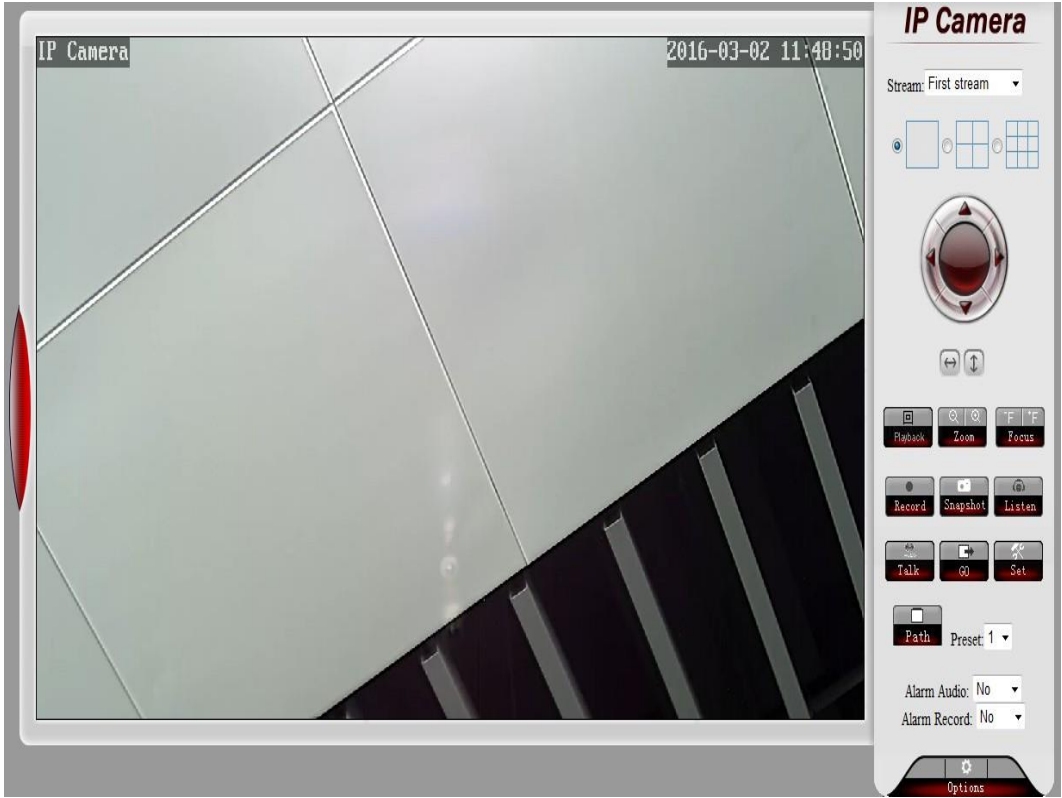
Stream: First stream

Path Preset: 1

Alarm Audio: No

Alarm Record: No

Options



Any other questions you can contact our
Technical Support Department at support@logan-cam.com

Cualquier otra consulta se puede comunicar al
Departamento de Soporte Técnico a través del correo
electrónico support@logan-cam.com



<http://www.logan-cam.com>