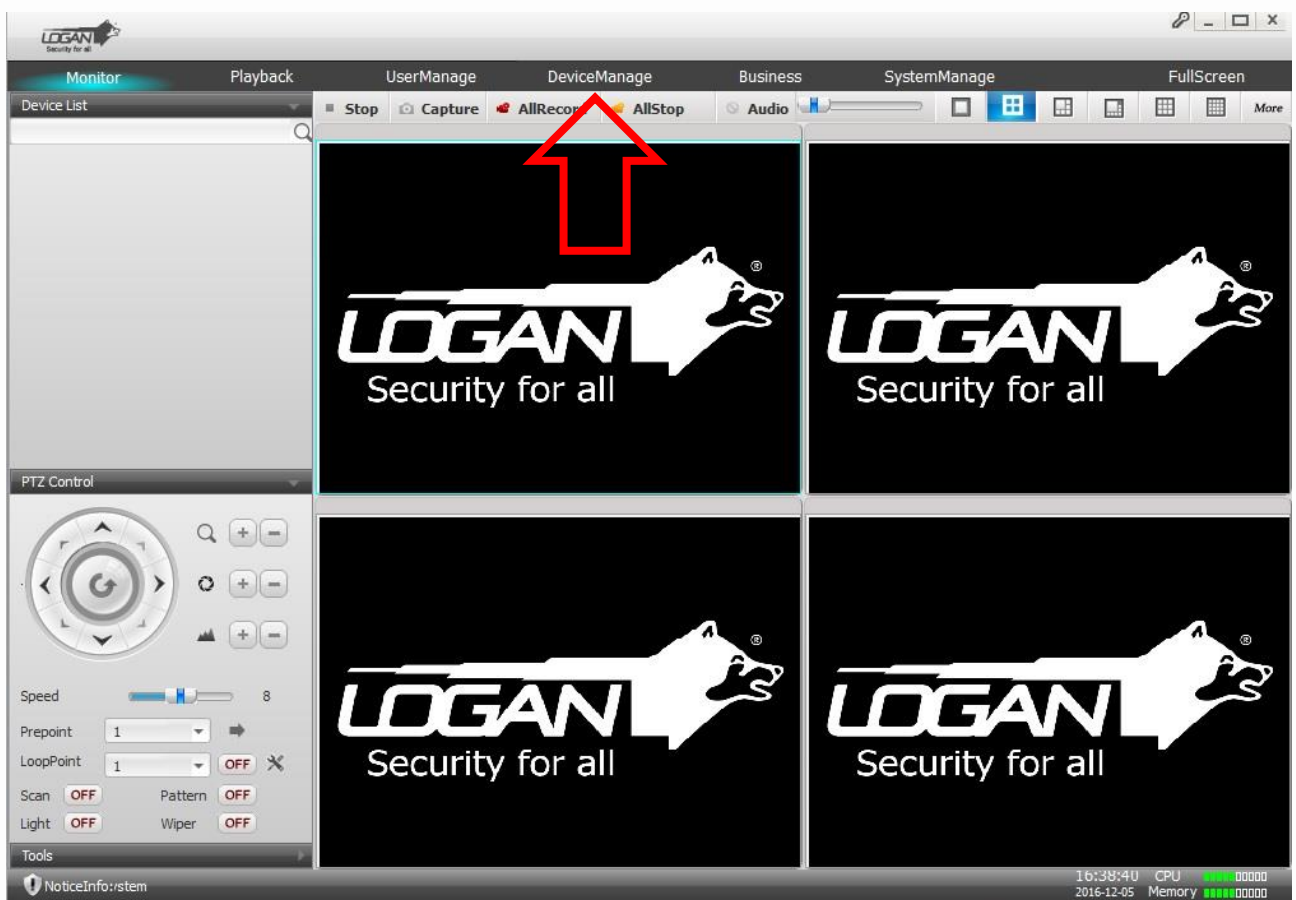


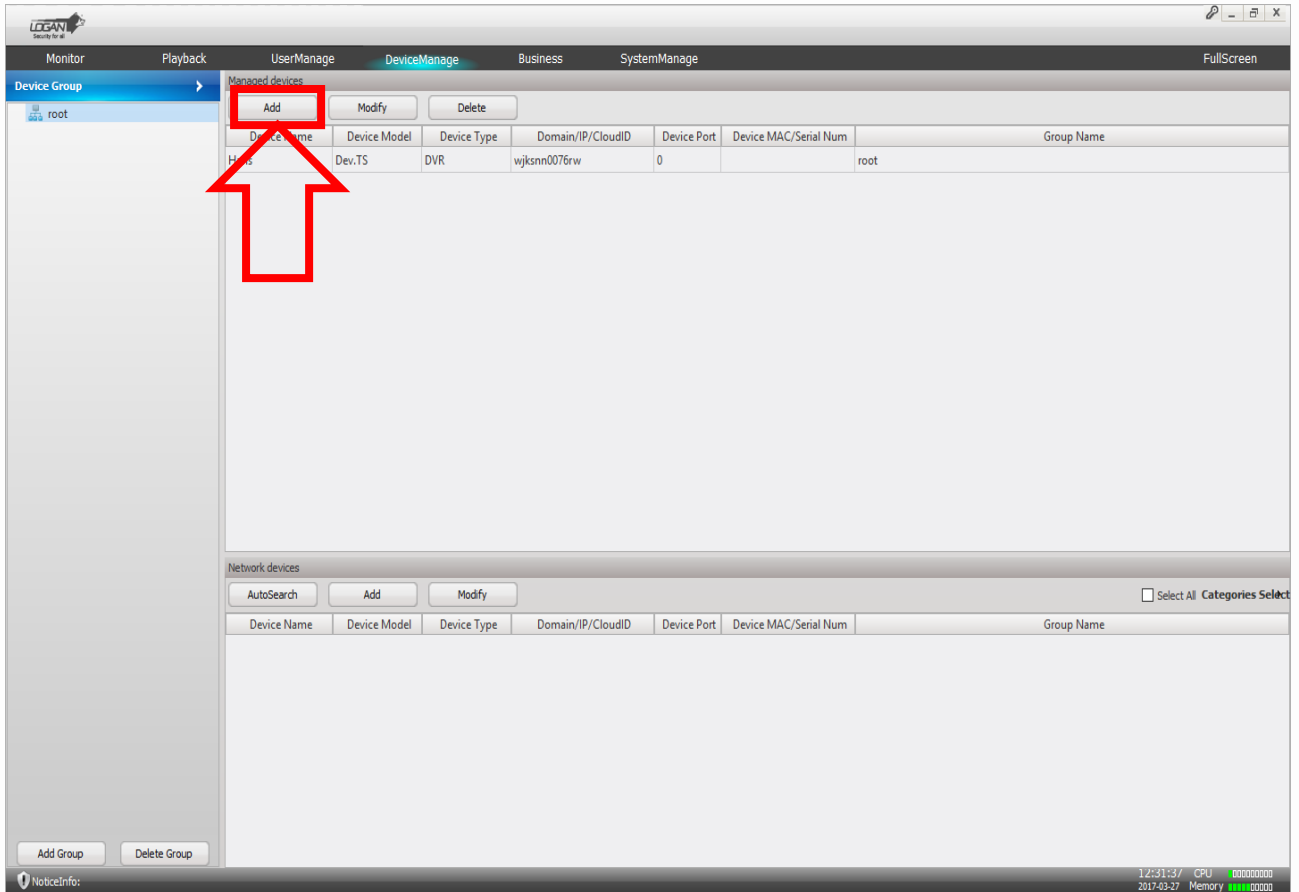
QUICK GUIDE

CMS FOR PC

On the top of the Main Screen you can see the settings and different options of the app.
To add a new device, press the Device Manage option.



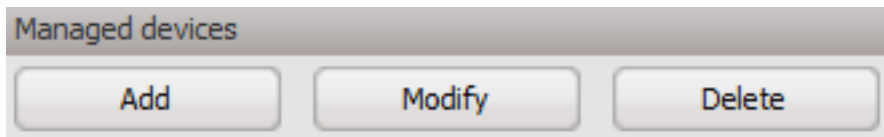
Press Manual Add and enter the data of your DVR.



The screenshot shows the LOGAN security software interface. The top navigation bar includes Monitor, Playback, UserManage, DeviceManage, Business, and SystemManage. The 'DeviceManage' section is active, showing a 'Managed devices' panel with 'Add', 'Modify', and 'Delete' buttons. A red box highlights the 'Add' button, and a red arrow points to it. Below the buttons is a table with the following data:

Device Name	Device Model	Device Type	Domain/IP/CloudID	Device Port	Device MAC/Serial Num	Group Name
H...	Dev.TS	DVR	wjksnn0076rw	0		root

Below the 'Managed devices' panel is a 'Network devices' section with 'AutoSearch', 'Add', and 'Modify' buttons. At the bottom left, there are 'Add Group' and 'Delete Group' buttons. At the bottom right, system information is displayed: 12:51:57 CPU 00000000, 2017-03-27 Memory 00000000.



A close-up view of the 'Managed devices' section of the software interface. It features three buttons: 'Add', 'Modify', and 'Delete', arranged horizontally.

The fields you will have to fill are the following:
Device Name: Describing Name, for example: home, office, etc.

Model: by default, Dev. TS

Device Type: by default, DVR

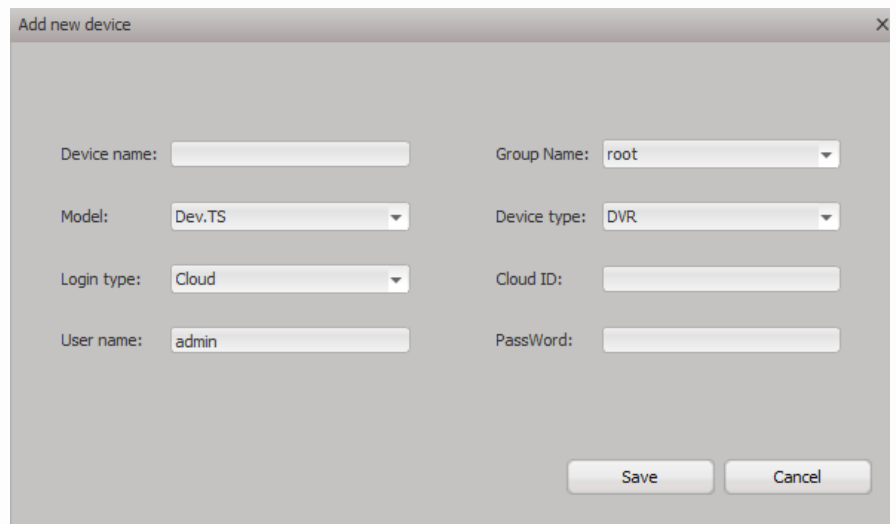
Login Type: Select Cloud

Cloud ID: Enter the Serial Number of your DVR.

UserName: by default, admin

Password: by default, leave it blank

Press SAVE.



The screenshot shows a dialog box titled "Add new device" with a close button (X) in the top right corner. The dialog contains the following fields:

Device name:	<input type="text"/>	Group Name:	root <input type="button" value="v"/>
Model:	Dev.TS <input type="button" value="v"/>	Device type:	DVR <input type="button" value="v"/>
Login type:	Cloud <input type="button" value="v"/>	Cloud ID:	<input type="text"/>
User name:	admin <input type="text"/>	PassWord:	<input type="text"/>

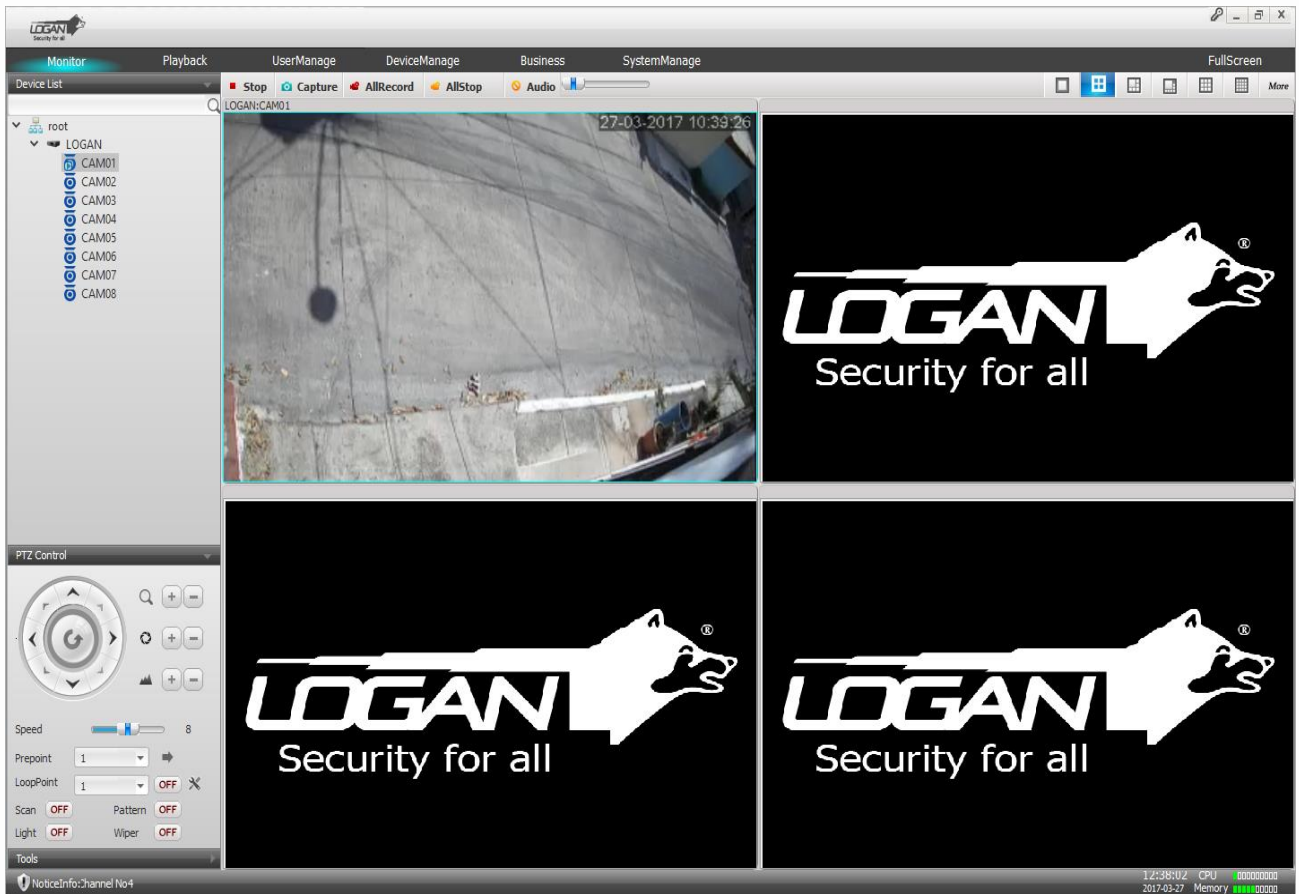
At the bottom right of the dialog, there are two buttons: "Save" and "Cancel".

Note: If the Access of your DVR was set with a different password, you have to write it in the Password field.

Enter in Monitor to remote view your device.
Your device should appear on the left list of the screen, open it and activate the camera that you want to monitor individually or all the cameras by selecting Open All MainStream or Open All SubStream.



Press right button on the camera if you want to activate and select Main Stream (high definition) or Extern Stream (medium definition).



You have finished setting up your DVR on CMS through your PC.

Any other questions you can contact our
Technical Support Department at support@logan-cam.com



<http://www.logan-cam.com/>