



Quick Guide Configuration

Proceed to download the app Yoosee on your smartphone

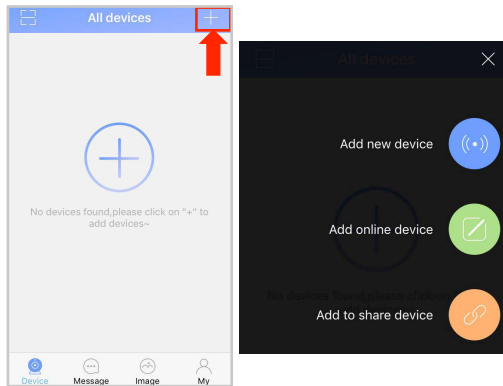
Yoosee

Free Download

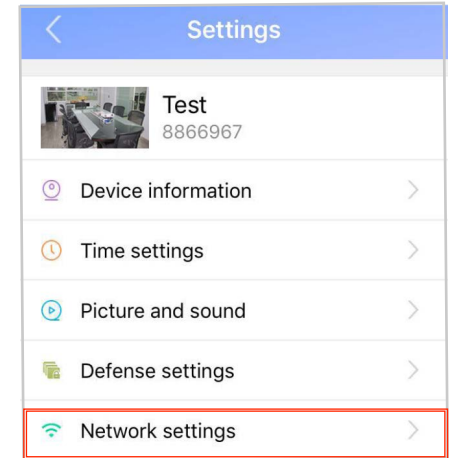
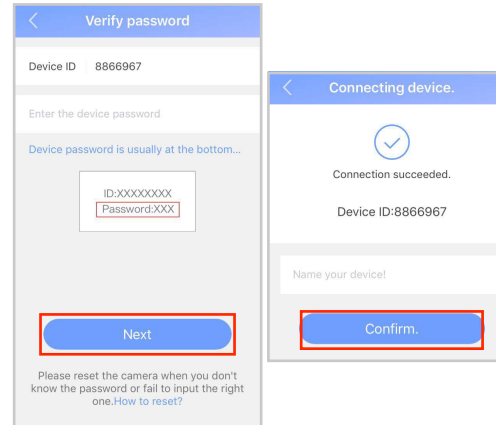
compatible with iOS and Android



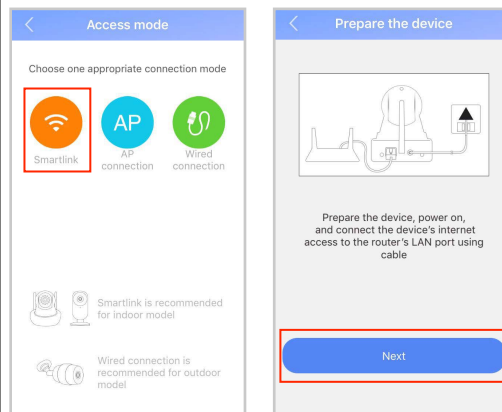
3) Press the "+" button to add a device and select "Add new device"



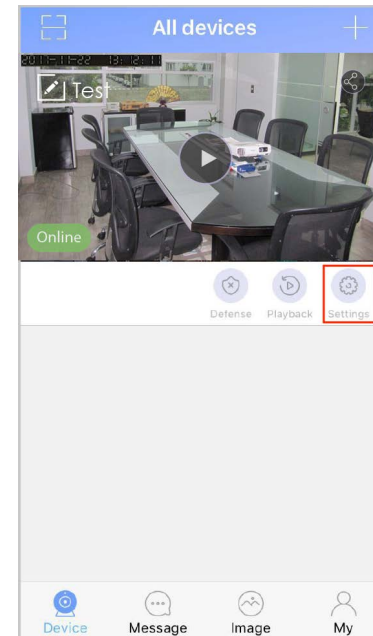
6) Enter the camera's password located in the camera's bottom. Then name your camera



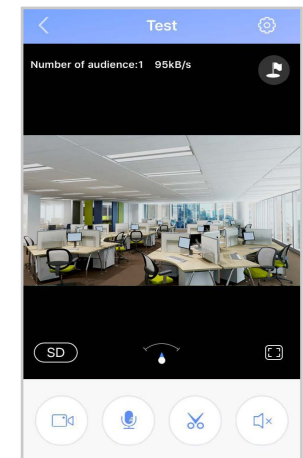
4) Select the "Smartlink" option and press "next" to continue.



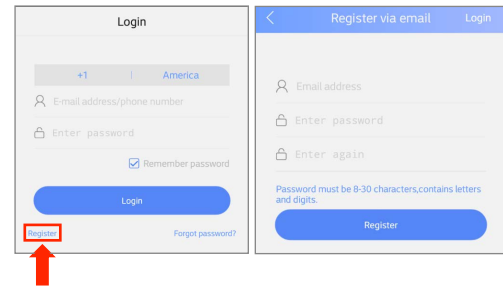
7) Go back to the device list and press the Settings button, and here you will see additional options.



9) Preview and control your camera from the App



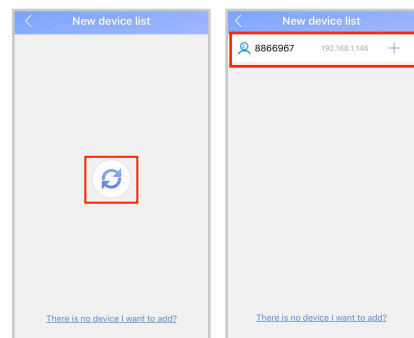
1) Press "Register" to create a new account and start to use the app.



2) Use an Ethernet cable to connect the router and camera.



5) Press the refresh button to find the camera, then select the camera.



8) Press the "Network settings" option, and here you will add the information of your personal wireless network.

Congratulations! You can now connect over the Internet to view your device remotely. For more information, visit our web site www.logan-cam.com

For documentation and warranty visit our help center support.logan-cam.com