

SECURITY CAMERA

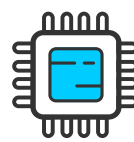
Bullet IMPX TVI Camera

TECHNICAL SPECIFICATIONS FOR THE CAMERA

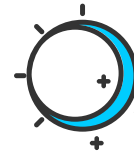
| | |
|-----------------------|-------------------------------|
| Image Sensor | 1/4" OV9732 CMOS/720P |
| Camera Resolution | 1 Megapixel |
| Effective Pixels | 1280(H) x 720(V) |
| Infrared LED | 36 pcs |
| Lens Mount | 3,6mm |
| Format | TVI |
| Field of View | 60° Degrees |
| Minimum Illumination | 0 LUX (IR on) |
| IR Cut Filter | Yes |
| Night Vision Distance | 82ft / 25m |
| Shutter Speed | NTSC (1/60 sec-1/100,000 sec) |
| Operative Temperature | 14° ~ 122°F / - 10° ~ 50°C |
| Ingress Protection | IP66 |
| Power Supply | DC 12V/320mA (IR on) |



MODEL: LT1B



1/4 CMOS



Day and night



Motion
Detection



Weatherproof



*Referential image

